



CCO #18-012

Project: 0483-01 - Perris High School No. 4
32255 Leon Road
Winchester, California 92596

Change Order #18-012: Cat. 18 - PCOs 10 & 25

CONTRACT COMPANY:	Fischer, Inc. 1372 West 26th Street San Bernardino, California 92405	CONTRACT FOR:	C-0483-01-018 :Plumbing
DATE CREATED:	10/ 12 /2022	CREATED BY:	Jeff Nicholson (Neff Construction, Inc.)
CONTRACT STATUS:	Pending - In Review	REVISION:	0
DESIGNATED REVIEWER:		REVIEWED BY:	
DUE DATE:		REVIEW DATE:	
INVOICED DATE:		PAID DATE:	
SCHEDULE IMPACT:		EXECUTED:	No
		TOTAL AMOUNT:	\$ 81,445.60

DESCRIPTION:

POTENTIAL CHANGE ORDER 18-010: CE #123 - CCD #093-RFI #429: Bldg D Water Heater Vents and Shaft

POTENTIAL CHANGE ORDER 18-025: CE #261 - CCD #163 Added Roof Drains at Bldg B3

ATTACHMENTS:**POTENTIAL CHANGE ORDERS IN THIS CHANGE ORDER:**

PCO #	Title	Schedule Impact	Amount
18-010	CE #123 - CCD #093-RFI #429: Bldg D Water Heater Vents and Shaft		15,049.94
18-025	CE #261 - CCD #163 Added Roof Drains at Bldg B3		66,395.66
TOTAL:			\$ 81,445.60

CHANGE ORDER LINE ITEMS:**PCO # 18-010 : CE #123 - CCD #093-RFI #429: Bldg D Water Heater Vents and Shaft**

#	Cost Code	Description	Type	Amount
1	50-18000 - Plumbing	Room D118-Added vent and intake. Deleted Split System and additional Shaft Walls per CCD #093.	Commitment	\$ 15,049.94
Subtotal:				\$15,049.94
Grand Total:				\$15,049.94

PCO # 18-025 : CE #261 - CCD #163 Added Roof Drains at Bldg B3

#	Cost Code	Description	Type	Amount
1	50-18000 - Plumbing	Add roof drains at Bldg B3 to reduce cricket height.	Commitment	\$ 66,395.66
Subtotal:				\$66,395.66
Grand Total:				\$66,395.66

The original (Contract Sum)	\$ 4,463,487.00
Net change by previously authorized Change Orders	\$ 440,633.60
The contract sum prior to this Change Order was	\$ 4,904,120.60
The contract sum would be changed by this Change Order in the amount of	\$ 81,445.60
The new contract sum including this Change Order will be	\$ 4,985,566.20
The contract time will not be changed by this Change Order	



CCO #18-012

Alfred Gessel

BakerNowicki Design Studio
731 Ninth Avenue, Suite A
San Diego California 92101
Buddy Gessel

Mike Fischer

Fischer, Inc.
1372 West 26th Street
San Bernardino California 92405

Hector Gonzalez

Perris Union High School District
155 East 4th Street
Perris California 92570

DocuSigned by:
Alfred Gessel 10/17/2022
F17C7254922A46E...
SIGNATURE DATE

DocuSigned by:
Mike Fischer 10/17/2022
3E8DC1657D40468...
SIGNATURE DATE

DocuSigned by:
Hector Gonzalez 10/18/2022
A677E390EC41495...
SIGNATURE DATE



PCO #18-010

Project: 0483-01 - Perris High School No. 4
32255 Leon Road
Winchester, California 92596

Potential Change Order #18-010: CE #123 - CCD #093-RFI #429: Bldg D Water Heater Vents and Shaft

CONTRACT COMPANY:	Fischer, Inc. 1372 West 26th Street San Bernardino California, 92405	CONTRACT FOR:	C-0483-01-018 - Plumbing
PCO NUMBER/REVISION:	18-010 / 1	CREATED BY:	Roy Wager (Neff Construction, Inc.)
REQUEST RECEIVED FROM:		CREATED DATE:	2/11 /2020
STATUS:	Approved		
REFERENCE:	CCD #093		
FIELD CHANGE:	No	ACCOUNTING METHOD:	Amount Based
LOCATION:	Bldg. D	PAID IN FULL:	No
SCHEDULE IMPACT:		TOTAL AMOUNT:	\$15,049.94

POTENTIAL CHANGE ORDER TITLE: CE #123 - CCD #093-RFI #429: Bldg D Water Heater Vents and Shaft

CHANGE REASON: Design Development

POTENTIAL CHANGE ORDER DESCRIPTION: *(The Contract Is Changed As Follows)*

CE #123 - CCD #093-RFI #429: Bldg D Water Heater Vents and Shaft

Revised water heater vents per CCD 93
Costs include credit for vents per Detail 4/P5.2

ATTACHMENTS:

[0483-01 CE #123, PCO #18-010R1 \\$15,049.94 - review.pdf](#) [_CCD #093_Bldg D Water Heater Vents.pdf](#)

#	Cost Code	Description	Type	Amount
1	50-18000 - Plumbing	Room D118-Added vent and intake. Deleted Split System and additional Shaft Walls per CCD #093.	Commitment	\$ 15,049.94
			Subtotal:	\$15,049.94
			Grand Total:	\$15,049.94

By signing below signatory recognizes and accepts the above dollar value contract adjustment

Owner's Representative Please process for signatures thanks.
Chad Goodwin
Facilities Supervisor
Perris Union High School District

Architect I have no additional comments.
Buddy Gessel, AIA, LEED AP
DLR Group | BakerNowicki

Print Sign Date

Print Sign Date

Construction Manager

Prime Contractor

Print Sign Date

Print Sign Date

FISCHER, INC.

1904-8

November 23, 2021

Neff Construction Inc.
 1701 South Bon View Avenue
 Ontario, CA 91761
 Ph: 909-947-3768
 Fx: 909-947-3823

Attn: Roy Wager
 Project: Perris High School #4

T&M Cost for CCD #093			\$ 18,244.74
Credit for Contract Scope per Detail 4/P5.2			
LABOR	Subtotal	Rate	Value
Plumber	-16	\$ 95.95	\$ (1,535.20)
Material			
4" PVC	-80	\$ 10.30	\$ (824.00)
Lead Flashings	-2	\$ 176.32	\$ (352.64)
Tax on Material	\$ (1,176.64)	8.75%	\$ (102.96)
Subtotal			\$ (2,814.80)
Bond		1%	\$ (28.15)
OH&P		12.50%	\$ (351.85)
Credit for Contract Scope			\$ (3,194.80)
REVISED TOTAL			\$ 15,049.94

Revised per M. Fischer 9/16/22

INVOICE

Description: **CCD #093** Extra work water heater vents not shown on plans in Bldg. D.

	Hours/Qty	Rate	
LABOR			
See attached labor list.	92	92.21	\$ 8,827.40
		Labor Total	\$8,827.40
EQUIPMENT			
Concrete Cores	4	150.00	\$600.00
Scissor Lift	20	20.00	\$400.00
		Equipment Total	\$1,000.00
MATERIAL			
See attached material list.			\$5,728.35
		Material Subtotal	\$5,728.35
		Tax	\$501.23
		Material Total	\$6,229.58
		Sub Total	\$16,056.98
		Profit & Overhead 12.5%	\$2,007.12
		Bond 1%	\$180.64
		Total	\$18,244.74

see revised total above

Perris HS #4

LABOR

	Hours	Rate	
12/17/2020 1 person, 6 hrs	6	\$ 95.95	\$ 575.70
12/18/2020 1 person, 4 hrs	4	\$ 95.95	\$ 383.80
12/21/2020 1 person, 6 hrs	6	\$ 95.95	\$ 575.70
12/22/2020 2 people, 4 hrs ea	8	\$ 95.95	\$ 767.60
1/20/2021 1 person, 3 hrs	3	\$ 95.95	\$ 287.85
1/21/2021 1 person, 2 hrs	2	\$ 95.95	\$ 191.90
1/26/2021 1 person, 8 hrs	8	\$ 95.95	\$ 767.60
6/14/2021 1 person, 4 hrs	4	\$ 95.95	\$ 383.80
7/1/2021 1 person, 10 hrs, 1 person, 8 hrs, 1 person, 3 hrs	21	\$ 95.95	\$ 2,014.95
7/2/2021 1 person, 10 hrs, 1 person, 2 hrs	12	\$ 95.95	\$ 1,151.40
8/6/2021 1 person, 2 hrs	2	\$ 95.95	\$ 191.90
8/31/2021 2 people, 8 hrs ea	16	\$ 95.95	\$ 1,535.20
	92		\$ 8,827.40

contract scope

Perris HS #4

MATERIAL

	QTY		RATE		
4" Schedule 40 PVC Pipe	80	LF	10.3	824	contract scope
4" IP Unistrut Clips	12	EA	10.2	122.4	
2-1/2" Slotted Unistrut	40	LF	22.11	884.4	
4" Lead Flashings	2	EA	176.32	705.28	contract scope
4" Riser Clamps	4	EA	18.26	73.04	
4" S x S Schedule 40 PVC 90	12	EA	25.65	307.8	
4" S x S Schedule 40 PVC 45	11	EA	40.19	442.09	
4" S x S Schedule 40 PVC Red	4	EA	19.42	77.68	
3" S x S Schedule 40 PVC 45	2	EA	21.84	43.68	
3" S x S Schedule 40 PVC 90	4	EA	17.94	71.76	
3" St Schedule 40 PVC 90	2	EA	29.53	59.06	
4" Schedule 40 PVC Pipe	100	LF	10.3	1030	
3" Schedule 40 PVC Pipe	40	LF	7.55	302	
Clear PVC Glue	1	QT	46.54	46.54	
1/2" x 3" Wedge Anchor	1	Box	4.28	4.28	
1/2" Plated All Thread	20	LF	1.86	37.2	
1/2" Rod Coupling	30	EA	1.79	53.7	
1/2" Plated Nuts	60	EA	0.5	30	
1/2" Plated Washers	60	EA	0.5	30	
4" Clevis Hangers	26	EA	18.27	475.02	
3" Clevis Hangers	6	EA	18.07	108.42	

5728.35

**RFI #429**

Neff Construction, Inc.

Project: 0483-01 - Perris High School No. 4
32255 Leon Road
Winchester, California 92596

Bldg D Water Heater Vents

TO:	Monica Hansen (Johnson Consulting Engineers) Leo Contreras (BakerNowicki Design Studio)	FROM:	Karl Moller (Neff Construction, Inc.) 1701 South Bon View Avenue Ontario, California 91761
DATE INITIATED:	01/27/ 2020	STATUS:	Closed
LOCATION:	Bldg. D	DUE DATE:	02/03/2020
COST CODE:		REFERENCE:	
COST IMPACT:	TBD	SCHEDULE IMPACT:	TBD
DRAWING NUMBER:	3/AD-PD-3.1	SPEC SECTION:	
LINKED DRAWINGS:			
RECEIVED FROM:	Gretchen Fischer (Fischer, Inc.)		
COPIES TO:	Jaime Castro (Neff Construction, Inc.), Curtis Fletcher (Neff Construction, Inc.), Lucas James (TYR, Inc.), Jeff Nicholson (Neff Construction, Inc.), Brittan Reed (Neff Construction, Inc.), Roy Wager (Neff Construction, Inc.)		

Question from Karl Moller (Neff Construction, Inc.) at 12:59 PM on 01/27/2020

At Bldg D, there are no vents or intakes shown for the water heaters in room D118. These water heaters require both a vent and intake with limited footage and fittings. The plumber provided a possible solution, see attached. Please advise.

Attachments:

[483-1 Cat 18 Water Heater Vent RFI.pdf](#)

Official Response: Leo Contreras (**BakerNowicki Design Studio**) responded on Wednesday, February 5th, 2020 at 5:56PM PST
Per CCD 093.

BNds
Leo Contreras

Attachments:

Official Response: Vince Vegas (**MA Engineers, Inc.**) responded on Tuesday, February 4th, 2020 at 10:36AM PST
Refer to CCD034 for CA+V through roof. Refer to CCD093 for shaft/horizontal routing.

Attachments:

BY

DATE

COPIES TO

FISCHER, INC.

Project:

PERRIS HS #4

REQUEST for INFORMATION

Architect: BAKER NOWICKI DESIGN STUDIOS
Construction Manager: NEFF CONSTRUCTION
Contractor: FISCHER, INC.

RFI No.: ~~25~~ 26
Date: 1-27-20

SUBJECT: Water Heater VENTS
Bldg D
DRAWING No.: Detail 3 on
A.D6-PD-3.1

SUBCONTRACTOR:
SPEC. SECTION:

INFORMATION REQUESTED: There are no vent or intake shown on Plumb drawing, these water heaters require a vent and intake with limited footage + fittings

SUGGESTED COURSE OF ACTION: I have picked a location to route this piping up through 2nd Floor + roof it is approx 17 to 23' east of D-5 line on face of block on DF line, would need a chase wall to conceal piping in wrestling room D206. see attached drawing

Submitted by JEFF HANSON
Representative of firm

Date Response Required _____

Schedule Impact: Yes No

Cost Impact: Yes No

Date _____

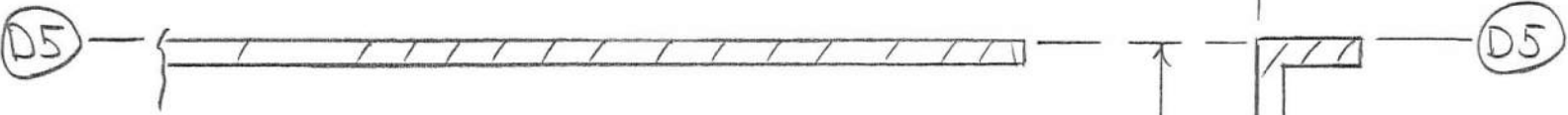
RESPONSE:

Response by _____
Representative of firm (Architect)

Date _____

Fischer, Inc.

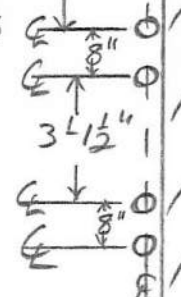
Page # 2 (DF)
RFI. No. ~~25~~ 26



17'-11"

wrestling
D206

proposed locations
3" W.H. - vents +
3" Intake's through
2nd Floor +
Roof



Approx 3 1/2'

(DF)




140

APPLICATION FOR SUBMITTAL OF POST-APPROVAL DOCUMENT

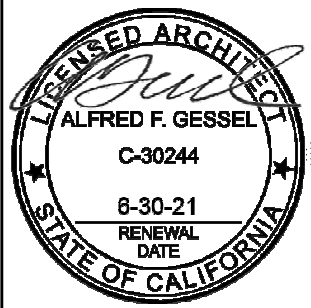
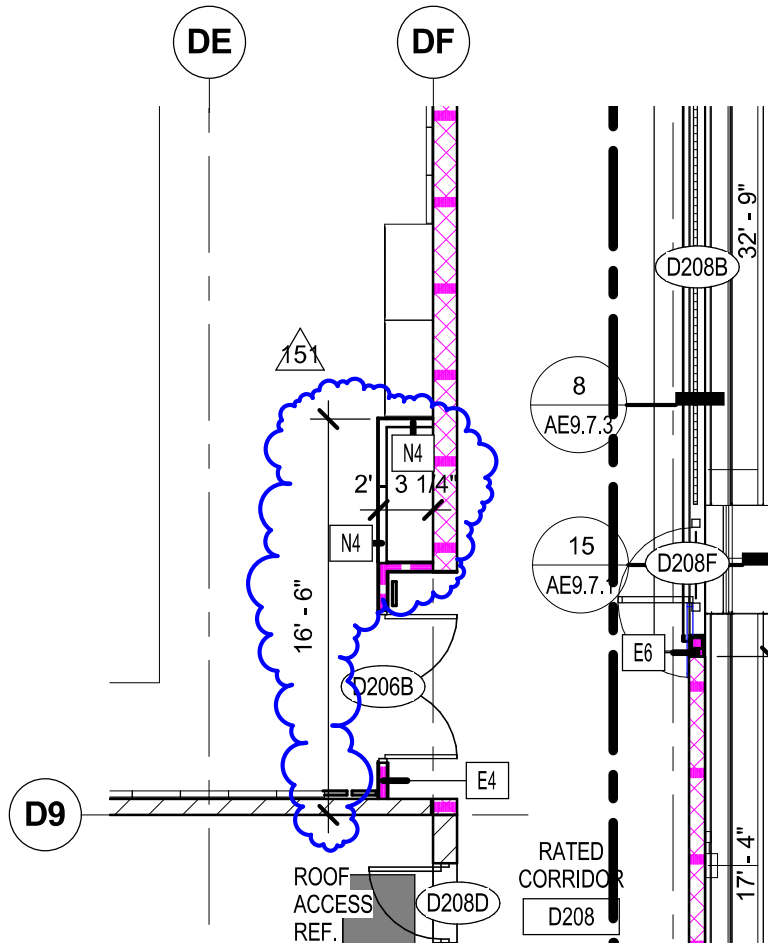
This application is for submittal of documents, after the initial approval of the project (post-approval documents), that require Division of the State Architect (DSA) review and approval. This form shall be completed by the Design Professional in General Responsible Charge of the project, in accordance with California Code of Regulations, Title 24, Part 1, Sections 4-317, 4-323 and 4-338 and in compliance with DSA IR A-6: Construction Change Document Submittal and Approval Process.

DSA documents referenced within this form are available on the [DSA Forms](#) or [DSA Publications](#) webpages.

1. SUBMITTAL TYPE: (Is this a resubmittal? Yes <input type="checkbox"/> No <input checked="" type="checkbox"/>)				
Deferred Submittal	Addendum Number:	Revision Number:	CCD Number: 093	Category A <input type="checkbox"/> or B <input checked="" type="checkbox"/>
2. PROJECT INFORMATION:				
School District/Owner: Perris Union High School District			DSA File Number: 33 H8	
Project Name/School: Perris High School #4			DSA Application Number 04 114675	
3. APPLICANT INFORMATION:				
Date Submitted: 02/05/20		Attached Pages? No <input type="checkbox"/> Yes <input checked="" type="checkbox"/> Number of pages? 8		
Firm Name: BakerNowicki Design Studio		Contact Name: Leo Contreras		
Work Email: lcontreras@bndesignstudio.com		Work Phone: (619) 795-2443		
Firm Address: 731 Ninth Avenue, Suite A		City: San Diego	State: CA	Zip Code: 92101
4. REASON FOR SUBMITTAL: (Check applicable boxes)				
For revision or addendum prior to construction.		<input checked="" type="checkbox"/> For a project currently under construction.		
For a project that has a form <i>DSA 301-N: Notification of Requirement for Certification</i> , <i>DSA 301-P: Posted Notification of Requirement for Certification</i> or a 90-Day Letter issued.				
To obtain DSA approval of an existing uncertified building or buildings.				
For Category B CCD this is: <input type="checkbox"/> a voluntary submittal, <input type="checkbox"/> a DSA required submittal (attach DSA notice requiring submission).				
5. DESIGN PROFESSIONAL IN GENERAL RESPONSIBLE CHARGE:				
Name of the Design Professional In General Responsible Charge: ALFRED GESSEL				
Professional License Number: C30244		Discipline: ARCHITECT		
Design Professional in General Responsible Charge Statement: The attached post-approval documents have been examined by me for design intent and appear to meet the appropriate requirements of Title 24, California Code of Regulations and the project specifications. They are acceptable for incorporation into the construction of the project.				
Signature: 		<small>Digitally signed by Alfred Gessel DN: cn=US, e=bgessel@bndesignstudio.com, o=BakerNowicki Design Studio, cn=Alfred Gessel Date: 2020.02.05 17:47:07-0800'</small>		
<i>DESIGN PROFESSIONAL IN GENERAL RESPONSIBLE CHARGE</i>				
6. CONFIRMATION, DESCRIPTION AND LISTING OF DOCUMENTS:				
For addenda, revisions, or CCDs: CHECK THIS BOX <input checked="" type="checkbox"/> to confirm that <i>all</i> post-approval documents have been stamped and signed by the Responsible Design Professional listed on form <i>DSA 1: Application for Approval of Plans and Specifications</i> for this project. (For <i>Deferred Submittals</i> , refer to <i>IR A-18: Use of Construction Documents Prepared by Other Professionals</i> , and <i>IR A-19: Design Professional's Signature and Seal (Stamp) on Construction Documents</i> , when applicable, for signature and seal requirements.)				
Provide a brief description of construction scope for this post-approval document (attach additional sheets if needed): Vent and intake added to Room D118. Ductless Split unit removed.				
List of DSA-approved drawings affected by this post-approval document: AD-2.1.1, M-0.2, MD-2.1, MD-2.2, MD-2.3, E6.8, E6.12, E9.12				

DSA USE ONLY

					Returned	DSA STAMP
SSS _____ Date _____	Approved	Disapproved	Not Required		Date:	
Comments: _____					By:	
FLS _____ Date _____	Approved	Disapproved	Not Required			
Comments: _____						
ACS _____ Date _____	Approved	Disapproved	Not Required			
Comments: _____						



TITLE: Bldg D Water Heater Vents	
PERRIS UNION HIGH SCHOOL DISTRICT PERRIS HIGH SCHOOL 4	
APPL. NO: 04-114675	FILE NO: 33-H8
BakerNowicki design studio	
731 Ninth Avenue, Suite A San Diego, CA 92101	

SHEET REF:	AD-2.1.1
DOC. REF:	CCD-093
CONTR. REF:	
DATE:	01.28.2020
JOB NO:	14001-00
DRAWING:	X-453

AIR CONDITIONING UNIT SCHEDULE

SYMBOL	DESCRIPTION	MANUFACTURER	FRIGORATING UNIT		COOLING CAPACITY		HEATING		ELECTRICAL		CONTROLS		REVISIONS	
			TYPE	SIZE	SEER	SEER2	SEER3	SEER4	SEER5	SEER6	SEER7	SEER8	SEER9	SEER10
AC01	Carrier 40000 BTU	Carrier	40000	12	12	12	12	12	12	12	12	12	12	12
AC02	Carrier 50000 BTU	Carrier	50000	12	12	12	12	12	12	12	12	12	12	12

AIR CONDITIONING UNIT SCHEDULE

SYMBOL	DESCRIPTION	MANUFACTURER	FRIGORATING UNIT		COOLING CAPACITY		HEATING		ELECTRICAL		CONTROLS		REVISIONS	
			TYPE	SIZE	SEER	SEER2	SEER3	SEER4	SEER5	SEER6	SEER7	SEER8	SEER9	SEER10
AC03	Carrier 60000 BTU	Carrier	60000	12	12	12	12	12	12	12	12	12	12	12
AC04	Carrier 70000 BTU	Carrier	70000	12	12	12	12	12	12	12	12	12	12	12

DUCTLESS SPLIT SYSTEM HEAT PUMP SCHEDULE


SYMBOL	DESCRIPTION	MANUFACTURER	FRIGORATING UNIT		COOLING CAPACITY		HEATING		ELECTRICAL		CONTROLS		REVISIONS	
			TYPE	SIZE	SEER	SEER2	SEER3	SEER4	SEER5	SEER6	SEER7	SEER8	SEER9	SEER10
SP01	Carrier 12000 BTU	Carrier	12000	12	12	12	12	12	12	12	12	12	12	12
SP02	Carrier 15000 BTU	Carrier	15000	12	12	12	12	12	12	12	12	12	12	12

SPLIT SYSTEM HEAT PUMP SCHEDULE

SYMBOL	DESCRIPTION	MANUFACTURER	FRIGORATING UNIT		COOLING CAPACITY		HEATING		ELECTRICAL		CONTROLS		REVISIONS	
			TYPE	SIZE	SEER	SEER2	SEER3	SEER4	SEER5	SEER6	SEER7	SEER8	SEER9	SEER10
SP03	Carrier 18000 BTU	Carrier	18000	12	12	12	12	12	12	12	12	12	12	12
SP04	Carrier 24000 BTU	Carrier	24000	12	12	12	12	12	12	12	12	12	12	12

SPLIT SYSTEM HEAT PUMP SCHEDULE

SYMBOL	DESCRIPTION	MANUFACTURER	FRIGORATING UNIT		COOLING CAPACITY		HEATING		ELECTRICAL		CONTROLS		REVISIONS	
			TYPE	SIZE	SEER	SEER2	SEER3	SEER4	SEER5	SEER6	SEER7	SEER8	SEER9	SEER10
SP05	Carrier 30000 BTU	Carrier	30000	12	12	12	12	12	12	12	12	12	12	12
SP06	Carrier 36000 BTU	Carrier	36000	12	12	12	12	12	12	12	12	12	12	12
SP07	Carrier 42000 BTU	Carrier	42000	12	12	12	12	12	12	12	12	12	12	12
SP08	Carrier 48000 BTU	Carrier	48000	12	12	12	12	12	12	12	12	12	12	12
SP09	Carrier 54000 BTU	Carrier	54000	12	12	12	12	12	12	12	12	12	12	12
SP10	Carrier 60000 BTU	Carrier	60000	12	12	12	12	12	12	12	12	12	12	12
SP11	Carrier 66000 BTU	Carrier	66000	12	12	12	12	12	12	12	12	12	12	12
SP12	Carrier 72000 BTU	Carrier	72000	12	12	12	12	12	12	12	12	12	12	12
SP13	Carrier 78000 BTU	Carrier	78000	12	12	12	12	12	12	12	12	12	12	12
SP14	Carrier 84000 BTU	Carrier	84000	12	12	12	12	12	12	12	12	12	12	12
SP15	Carrier 90000 BTU	Carrier	90000	12	12	12	12	12	12	12	12	12	12	12
SP16	Carrier 96000 BTU	Carrier	96000	12	12	12	12	12	12	12	12	12	12	12
SP17	Carrier 102000 BTU	Carrier	102000	12	12	12	12	12	12	12	12	12	12	12
SP18	Carrier 108000 BTU	Carrier	108000	12	12	12	12	12	12	12	12	12	12	12
SP19	Carrier 114000 BTU	Carrier	114000	12	12	12	12	12	12	12	12	12	12	12
SP20	Carrier 120000 BTU	Carrier	120000	12	12	12	12	12	12	12	12	12	12	12




MECHANICAL SCHEDULES

DATE: 11/13/2018

PROJECT: 1014001-00

DRAWING: M-0.2

NO. 154



Baker Nowicki

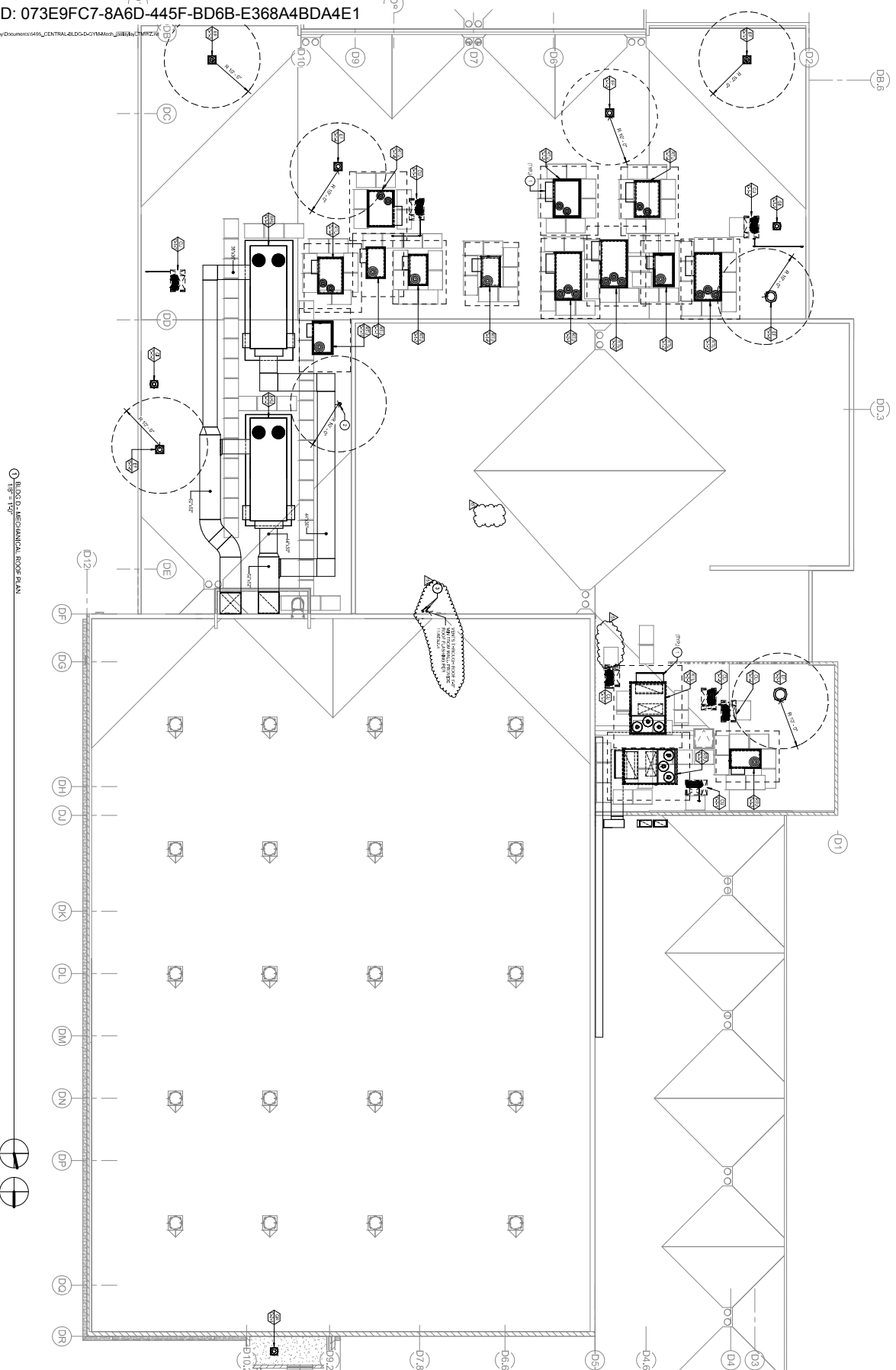
271 West Avenue, Suite 4, San Diego, CA 92108

www.baker-nowicki.com

PREPARED FOR: HIGH SCHOOL #4

1/26/2012 5:20:25 PM

C:\Users\jshelby\Documents\949_CENTRAL_BLDG-D-DYMAN\PROJECT\DWG\

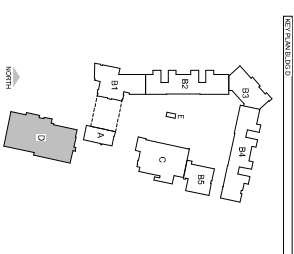


BLDG D - MECHANICAL ROOF PLAN

- KEY NOTES**
1. CONSULT ARCHITECT'S PLAN.
 2. REFER TO ARCHITECT'S SPECIFICATIONS.
 3. REFER TO ARCHITECT'S NOTES FOR MATERIALS AND FINISHES.

Baker Nowicki
 ARCHITECTS
 271 West Avenue, Suite 4, San Diego, CA 92101
 www.bakernowicki.com

PERISS UNION HIGH SCHOOL DISTRICT
 HIGH SCHOOL #4



STATE OF MARYLAND
 PROFESSIONAL ENGINEER
 JOHN A. 14675
 MECHANICAL ENGINEERING

**BLDG D - MECHANICAL
 ROOF PLAN**

PROJECT NO. 2695
 DATE: 11/12/2010
 DRAWING
MD-2.3
 X-457



PCO #18-025

Project: 0483-01 - Perris High School No. 4
 32255 Leon Road
 Winchester, California 92596

Potential Change Order #18-025: CE #261 - CCD #163 Added Roof Drains at Bldg B3

CONTRACT COMPANY:	Fischer, Inc. 1372 West 26th Street San Bernardino California, 92405	CONTRACT FOR:	C-0483-01-018 - Plumbing
PCO NUMBER/REVISION:	18-025 / 1	CREATED BY:	Roy Wager (Neff Construction, Inc.)
REQUEST RECEIVED FROM:		CREATED DATE:	1/5 /2021
STATUS:	Approved		
REFERENCE:	Cat. 18 COR 1904-20		
FIELD CHANGE:	No	ACCOUNTING METHOD:	Amount Based
LOCATION:		PAID IN FULL:	No
SCHEDULE IMPACT:		TOTAL AMOUNT:	\$66,395.66

POTENTIAL CHANGE ORDER TITLE: CE #261 - CCD #163 Added Roof Drains at Bldg B3

CHANGE REASON: Design Development

POTENTIAL CHANGE ORDER DESCRIPTION: *(The Contract Is Changed As Follows)*

CE #261 - CCD #163 Added Roof Drains at Bldg B3
 Add roof drains at Bldg B3 to reduce cricket height.

Note: This PCO only represents added costs for Cat 18 to add drains.

ATTACHMENTS:

[CCD-#163-B_Bldg.-B3-Roof-Crickets.pdf](#) [_0483-01 PCO 18-025R1, \\$66,395.66 - In Review.pdf](#)

#	Cost Code	Description	Type	Amount
1	50-18000 - Plumbing	Add roof drains at Bldg B3 to reduce cricket height.	Commitment	\$ 66,395.66
Subtotal:				\$66,395.66
Grand Total:				\$66,395.66

By signing below signatory recognizes and accepts the above dollar value contract adjustment

Owner's Representative Please process for signatures thanks.
 Chad Goodwin
 Facilities Supervisor
 Perris Union High School District

Architect I have no additional comments.
 Buddy Gessel, AIA, LEED AP
 DLR Group | BakerNowicki

 Print Sign Date

 Print Sign Date

Construction Manager

Prime Contractor

 Print Sign Date

 Print Sign Date

Potential Change Order #18-025: CE #261 - CCD #163 Added Roof Drains at Bldg B3

Response to Architect's review comments.

1. Please have the plumbing contractor verify LF of 4" pipe. They list 300 LF and I can only confirm 172 LF, see takeoff below.

B3 interior work continued thru November & December 2020 (to the extent possible without a roof in place) while this B3 roofing issue was being resolved. When roof drains arrived in January congestion from work in place and the requirement to slope drains apparently precluded Fischer from routing drain lines as shown on CCD 163 P sheets. Fischer's as-built plans for the added roof drains is included in support of the quantity of pipe charged in this PCO. Neff has verified Fischer's take-off and believes the quantity to be correct based on their as-built routing.

2. The roofing contractor shall submit a credit for the significantly reduced tapered insulation area and thickness, including labor.

The roofing contractor has been closed out and therefore a credit processed thru their contract is not an available option at this time. However, it should be noted that all tapered insulation required for the Building B roof had been delivered to the project when the issue was under review (material loaded on 11.3.2020). Additionally, the roofing contractor worked with Neff on several occasions to help resolve the issue. Their team included company principal, PM and superintendents as well as representatives from Johns Manville. Various layouts and mock-up were constructed in the field by this team. Based on these efforts, I doubt there are labor hours to credit.

3. To be noted: This change order resulted from the steel fabricator not coordinating the required heights of the mechanical curbs in this area per the requirements of details 9/AE9.1.0, min 8" above insulation and 2/S0.9. The revision to the crickets and additional drains avoided rework of the installed mechanical curbs.

It was noted during the review of the B3 roof issue that the dimension on 2/S0.9 may not allow for an excessively tall curb (1'-6" max dimension – unclear from what point on the roof the 1'-6" dimension is taken from). However, I do not believe clarification on this dimension was sought from the SEOR. Based on the work to change the curb height (steel rework, possible CCD, crane to remove and re-set units, etc.) the roof drains added in CCD 163 was agreed by the Project Team as the best option to timely resolve the issue and allow work to progress.

FISCHER, INC.

1904-20

December 9, 2021
 resubmitted 9/19/2022

Neff Construction Inc.
 1701 South Bon View Avenue
 Ontario, CA 91761
 Ph: 909-947-3768
 Fx: 909-947-3823

Attn: Roy Wager
 Project: Perris High School #4

INVOICE

Description: CCD 163 Bldg B3 Extra work, added 4" roof & overflow drains.

LABOR

See attached labor list.

Hours/Qty	Rate	
436	95.95	\$ 41,834.20
	Labor Total	\$ 41,834.20

Revised - see below

EQUIPMENT

Scissor Lift

264	20.00	\$5,280.00
	Equipment Total	\$5,280.00

Revised - see below

MATERIAL

See attached material list.

	\$17,249.60
Material Subtotal	\$17,249.60 OK
Tax	\$1,509.34
Material Total	\$18,758.94

Sub Total	\$65,873.14
Profit & Overhead 12.5%	\$8,234.14
Bond 1%	\$741.07
Total	\$74,848.36

Revised - see below

Item	Subtotal	Rate	Value
LABOR			
Plumber	104	\$ 95.95	\$ 9,978.80
Laborer	336	\$ 75.24	\$ 25,280.64
Material			
All	1	\$ 17,249.60	\$ 17,249.60
Tax on Material	\$17,249.60	8.75%	\$ 1,509.34
Equipment			
Lift	224	\$ 20.00	\$ 4,480.00
Subtotal			\$ 58,498.38
Bond		1%	\$ 584.98
OH&P		12.50%	\$ 7,312.30
TOTAL T&M			\$ 66,395.66

See second sheet for details

Perris HS #4

CCD 163

Bldg B4

LABOR

Hours Rate

1/11/2021	4 people, 8 hrs ea	32	\$ 95.95	\$ 3,070.40
1/12/2021	4 people, 8 hrs ea	32	\$ 95.95	\$ 3,070.40
1/13/2021	4 people, 8 hrs ea	32	\$ 95.95	\$ 3,070.40
1/14/2021	4 people, 8 hrs ea	32	\$ 95.95	\$ 3,070.40
1/15/2021	4 people, 8 hrs ea	32	\$ 95.95	\$ 3,070.40
1/18/2021	4 people, 8 hrs ea	32	\$ 95.95	\$ 3,070.40
1/19/2021	4 people, 8 hrs ea	32	\$ 95.95	\$ 3,070.40
1/20/2021	5 people, 8 hrs ea	40	\$ 95.95	\$ 3,838.00
1/21/2021	5 people, 8 hrs ea	40	\$ 95.95	\$ 3,838.00
1/22/2021	4 people, 8 hrs ea	32	\$ 95.95	\$ 3,070.40
1/26/2021	3 people, 8 hrs ea	24	\$ 95.95	\$ 2,302.80
1/27/2021	4 people, 8 hrs ea	32	\$ 95.95	\$ 3,070.40
1/28/2021	2 people, 8 hrs ea	12	\$ 95.95	\$ 1,151.40
2/1/2021	4 people, 8 hrs ea	32	\$ 95.95	\$ 3,070.40

436 \$ 41,834.20

Fischer 1904-20		Cross check hours and classification from dailies														Subtotal	Rate	Value
Item	1/11/2021	1/12/2021	1/13/2021	1/14/2021	1/15/2021	1/18/2021	1/19/2021	1/20/2021	1/21/2021	1/22/2021	1/26/2021	1/27/2021	1/28/2021	2/1/2021				
LABOR	Date & Hours																	
Plumber																104	\$ 95.95	\$ 9,978.80
John Lytle	8	8	8	8	8	8	8	8	8	8	8	8		8	104			
Laborer																336	\$ 75.24	\$ 25,280.64
Scott Weaver	8	8	8	8	8	8	8	8	8	8	8	8		8	104			
Pete Molina	8	8	8	8	8	8	8	8	8	8	8	8	8	8	104			
Don Price	8	8	8	8	8	8	8	8	8	8	8	8	8	8	112			
Dan Matteson								8	8						16			
Daily Labor Hours	32	32	32	32	32	32	32	40	40	32	24	32	16	32	440			
Material																		
All	1														1	\$ 17,249.60	\$ 17,249.60	
Tax on Material															\$17,249.60	8.75%	\$ 1,509.34	
Equipment																		
Lift	16	16	16	16	16	16	16	16	16	16	16	16	16	16	224	\$ 20.00	\$ 4,480.00	
Subtotal																	\$ 58,498.38	
Bond																1%	\$ 584.98	
OH&P																12.50%	\$ 7,312.30	
TOTAL T&M																	\$ 66,395.66	

Perris HS #4

RFI #163

Bldg B3

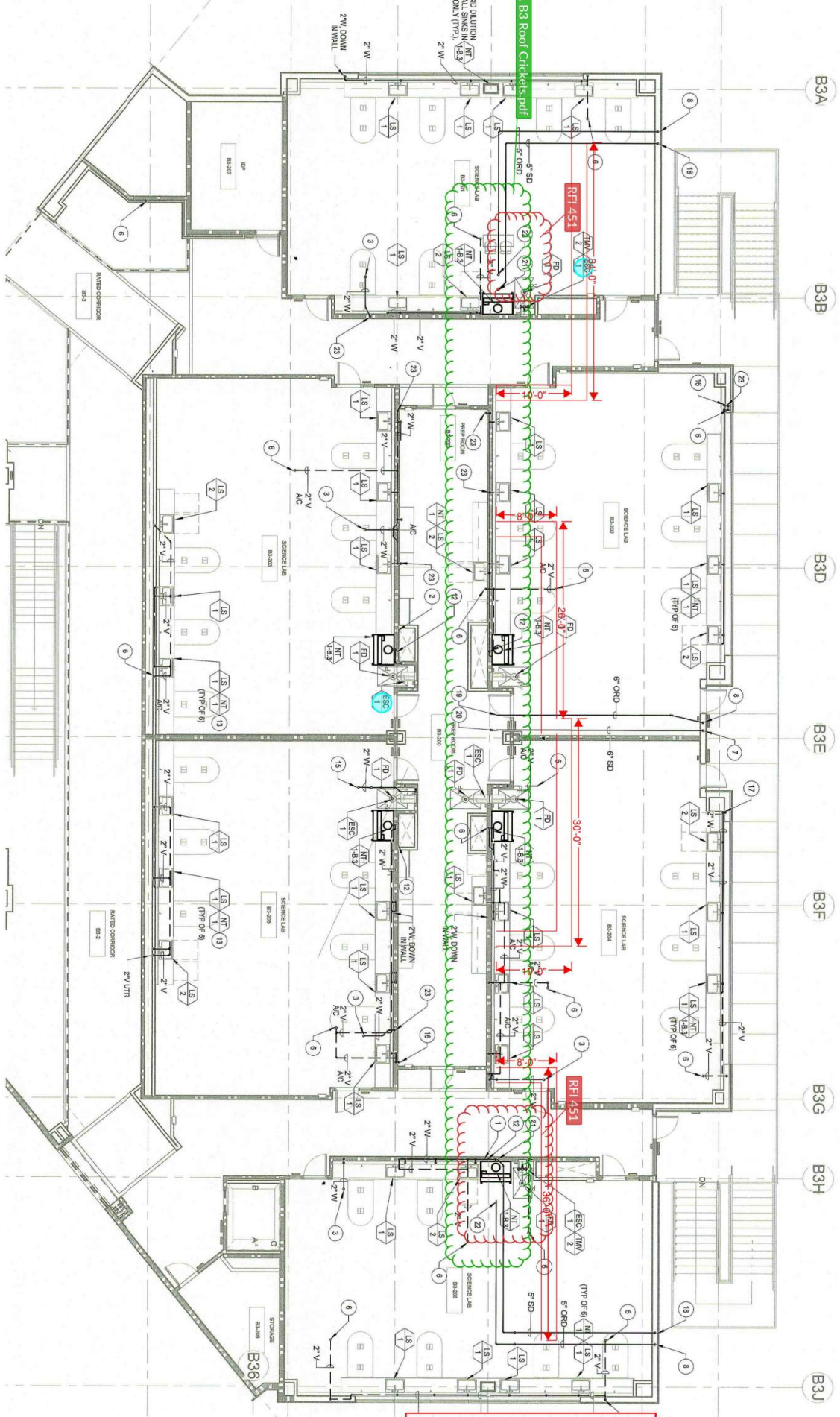
MATERIAL

QTY

RATE

Zurn Roof Drain	4	ea	629.52	2,518.08
Zurn Overflow Drain	4	ea	749.73	2,998.92
30 x 30 Sheet lead	8	ea	187.50	1,500.00
5" NH 1/8 Bend	2	ea	44.16	88.32
5" x 4" Comby	4	ea	120.60	482.40
4" Comby	4	ea	62.79	251.16
4" MS 1/4 Bend	12	ea	15.95	191.40
4" 1/8 Bend	4	ea	25.67	102.68
4" 1/16" Bend	4	ea	19.50	78.00
4" NH Pipe	300	lf	18.52	5,556.00
5" NH Coupling	8	ea	16.93	135.44
4" NH Coupling	100	ea	8.50	850.00
5/8" Rod Couplings	60	ea	3.90	234.00
5/8" Plated Nuts	120	ea	0.64	76.80
5/8" Plated All Thread	120	lf	2.50	300.00
4" Clevis Hanger	60	ea	15.54	932.40
5/8" Roof Deck Inserts	60	ea	15.90	954.00

\$17,249.60



- 19 5" RD UP
- 20 5" ORD UP
- 21 5" RD UP
- 22 5" ORD UP
- 23 2" WASTE DOWN
- 24 3" WASTE DOWN

CCD 163	Roof Drain Pipe Lengths
19	34
20	10
21	10
22	26
23	26
24	8
25	30
26	30
27	10
28	10
29	36
30	36
31	8
32	8
Total	324