



PERRIS UNION
HIGH SCHOOL DISTRICT

TRUSTEE AREA REDISTRICTING

November 17, 2021



PUHSD.ORG



@puhsd



PerrisUnionHSD



PerrisUnionHSD



TRUSTEE AREAS - HISTORY

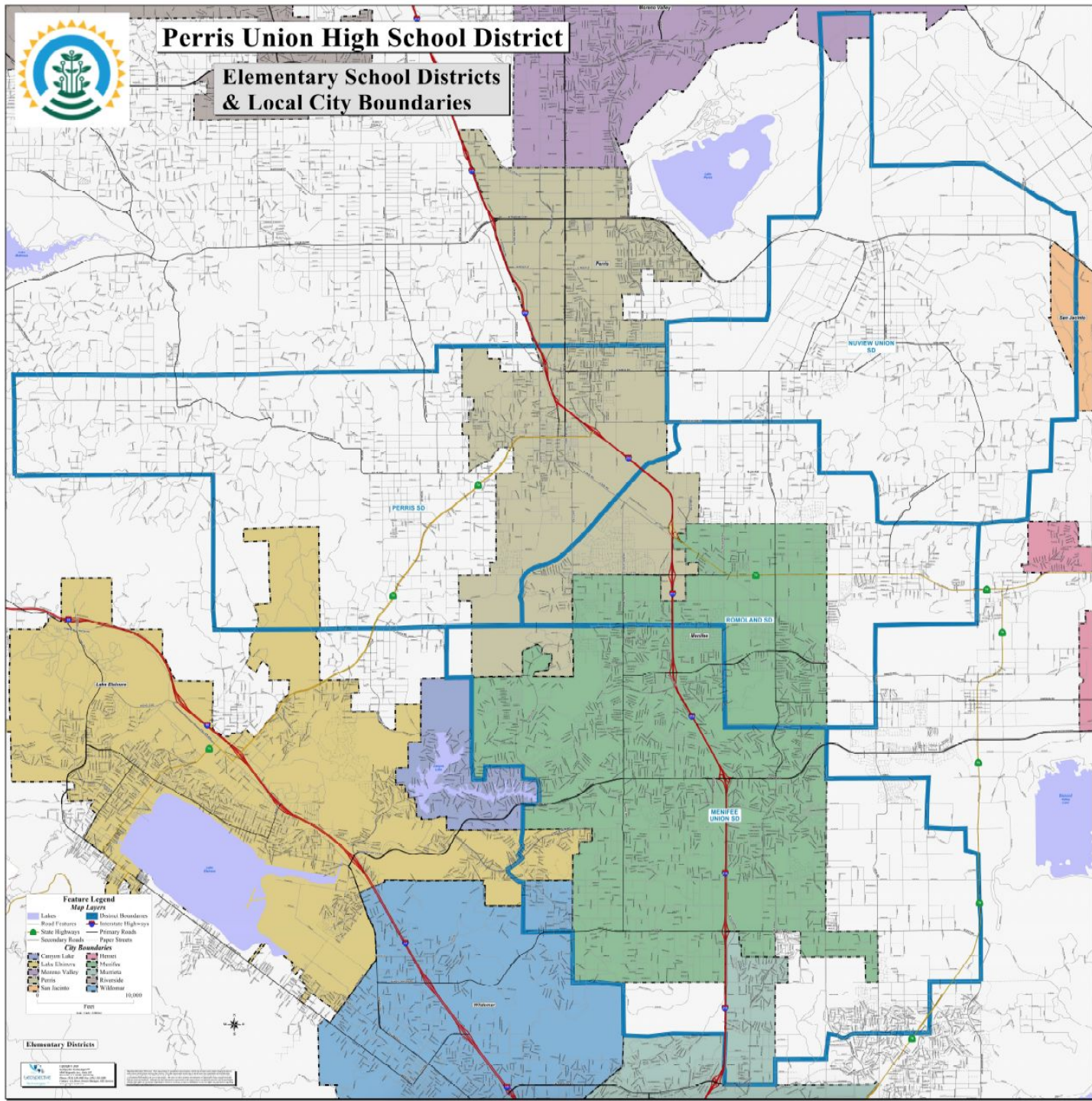
- In 2010, the PUHSD Board of Trustees began discussing the California Voting Rights Act and Federal Voting Rights Act, and the impact on the District.
 - At that time, PUHSD voters elected Trustees “at-large”.
- To allow for sufficient time for the transition from at-large elections to trustee area elections, PUHSD moved from odd number year elections to even number year elections in 2011.
 - Then Trustees Cooley, Kroencke, and Williams had their terms extended to 2012 while then Trustees Hulstrom and Twyman had their terms extended to 2014.
- On November 16, 2011 the PUHSD Board of Trustees adopted the now current trustee areas that became effective following the November 6, 2012 election.



REDISTRICTING FOLLOWING THE 2020 CENSUS

- School districts that elect members of their governing boards by trustee area are required to review the population balance within their trustee voting areas following the release of each decennial Census.
- Specifically, Section 5019.5 of the Education Code requires school districts with trustee area elections to review and **adjust** the boundaries of any or all trustee areas of the district to ensure that each trustee area is roughly equal in total population to the other trustee areas.
- The Education Code gives school districts until February 28 of the year following the release of the decennial Census data to adjust those areas.
 - Given the recent release of the 2020 Census data this year, that translates to a February 28, 2022 deadline to review and make any adjustments to trustee areas.
 - If any district does not make adjustments to its trustee areas by this deadline, the County Committee on School District Organization is obligated to adjust trustee areas on behalf of that school district.

SCHOOL DISTRICT AND CITY BOUNDARIES





DISTRICT DEMOGRAPHICS

Total Population

2010 CENSUS DATA

POPULATION	TOTAL	%
Hispanic Origin	76,366	48%
White	62,432	39%
Black/African American	10,451	7%
American Indian/Alaska Native	1,256	1%
Asian	7,083	4%
Native Hawaiian/Pacific Islander	637	0%
Other	381	0%
Multiple Race	856	1%
TOTAL POPULATION	159,462	100%

2020 CENSUS DATA

POPULATION	TOTAL	%
Hispanic Origin	103,741	51%
White	66,086	32%
Black/African American	13,417	7%
American Indian/Alaska Native	690	0%
Asian	10,864	5%
Native Hawaiian/Pacific Islander	760	0%
Other	1,030	1%
Multiple Race	7,733	4%
TOTAL POPULATION	204,051	100%



DISTRICT DEMOGRAPHICS

18+ Population - Citizens Voting Age Population (CVAP)

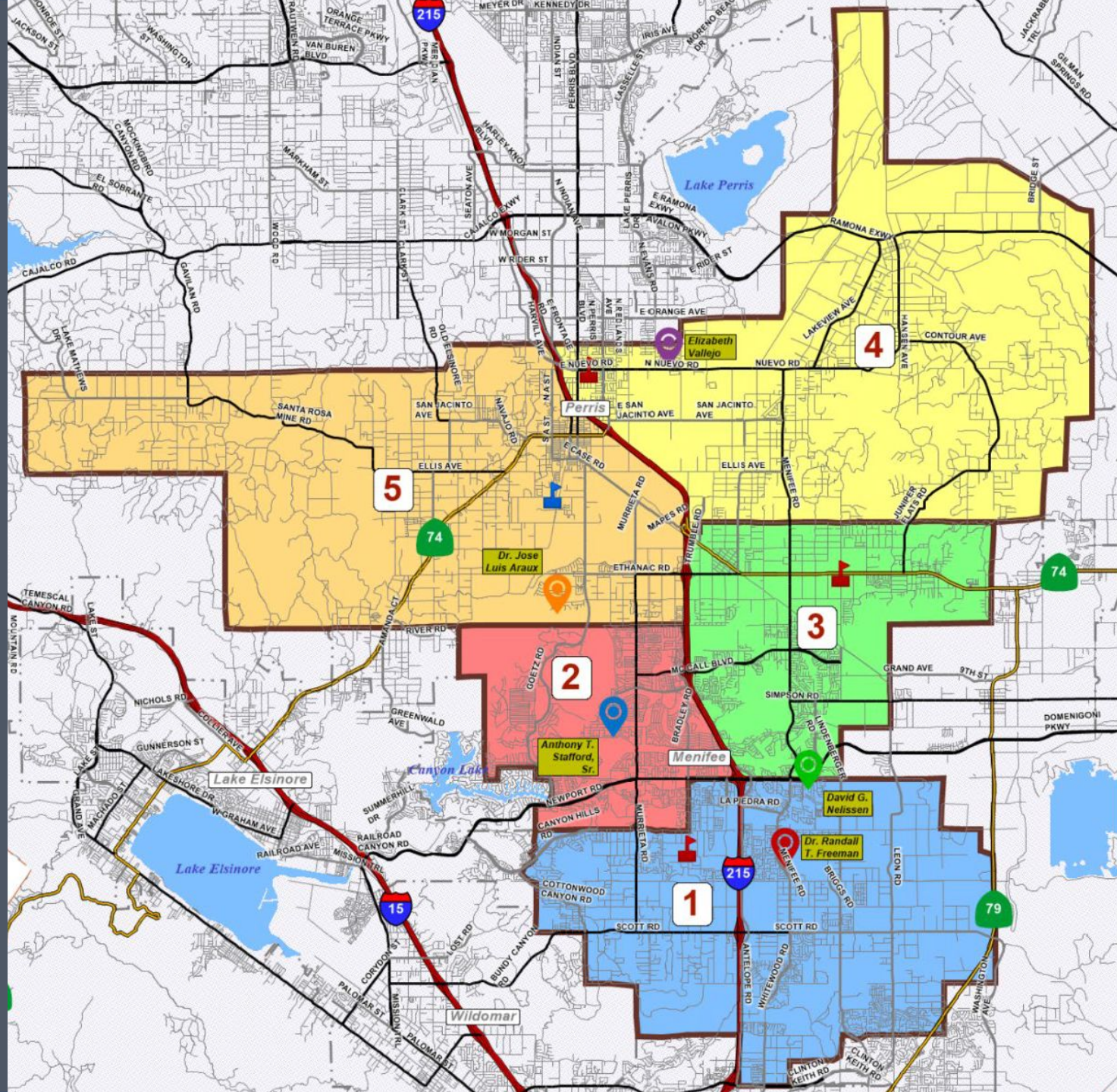
2010 CENSUS DATA

18+ POPULATION - CVAP	TOTAL	%
Hispanic Origin	46,910	42%
White	50,439	45%
Black/African American	7,026	6%
American Indian/Alaska Native	951	1%
Asian	5,109	5%
Native Hawaiian/Pacific Islander	423	0%
Other	237	0%
Multiple Race	452	0%
TOTAL CVAP	111,547	100%

2020 CENSUS DATA

18+ POPULATION - CVAP	TOTAL	%
Hispanic Origin	70,064	47%
White	54,091	36%
Black/African American	10,347	7%
American Indian/Alaska Native	547	0%
Asian	8,836	6%
Native Hawaiian/Pacific Islander	628	0%
Other	688	1%
Multiple Race	4,918	3%
TOTAL CVAP	150,119	100%

CURRENT TRUSTEE AREA BOUNDARIES



Feature Legend

Map Layers

- City Boundaries
- Road Features
- State Highways
- Secondary Roads
- High Schools
- Open Water
- Interstate Highways
- Primary Roads
- Middle Schools

Trustee Areas - 2011

- 1 (1)
- 2 (1)
- 3 (1)
- 4 (1)
- 5 (1)

Board Member Residence

- 1
- 2
- 3
- 4

Not to Scale



TRUSTEE AREA DEMOGRAPHICS

Total Population

2010 CENSUS DATA

TRUSTEE AREA	1	2	3	4	5
Total Population	32,859	31,803	30,535	33,057	31,208
	20.43%	19.94%	19.14%	20.73%	19.57%
Hispanic Origin	-	-	-	-	-
	31%	32%	40%	67%	70%
White	-	-	-	-	-
	51%	58%	48%	21%	19%
Black	-	-	-	-	-
	7%	5%	5%	9%	8%
Native American	-	-	-	-	-
	1%	1%	1%	1%	1%
Asian	-	-	-	-	-
	9%	4%	5%	2%	2%
Hawaiian	-	-	-	-	-
	0%	0%	0%	0%	0%
Other	-	-	-	-	-
	0%	0%	0%	0%	0%
Multiple Race	-	-	-	-	-
	1%	1%	1%	0%	0%

2020 CENSUS DATA

TRUSTEE AREA	1	2	3	4	5
Total Population	53,173	39,955	40,838	35,234	34,761
	26.06%	19.58%	20.01%	17.27%	17.03%
Hispanic Origin	18,518	14,679	18,579	25,671	26,024
	35%	37%	45%	73%	75%
White	21,702	18,988	15,041	5,229	5,126
	41%	48%	37%	15%	15%
Black	3,885	2,263	2,731	2,569	1,969
	7%	6%	7%	7%	6%
Native American	210	151	163	82	84
	0%	0%	0%	0%	1%
Asian	5,286	1,906	2,180	794	698
	1%	5%	5%	2%	2%
Hawaiian	290	154	139	105	72
	0%	0%	0%	0%	0%
Other	308	187	232	152	151
	0%	0%	0%	0%	0%
Multiple Race	2,974	1,627	1,773	722	637
	6%	4%	4%	2%	2%



TRUSTEE AREA DEMOGRAPHICS

18+ Population - Citizens Voting Age Population (CVAP)

2010 CENSUS DATA

TRUSTEE AREA	1	2	3	4	5
18+ CVAP	22,348	24,751	22,086	21,578	20,784
	20.03%	22.18%	19.80%	19.34%	18.63%
Hispanic Origin	-	-	-	-	-
	27%	26%	34%	62%	64%
White	-	-	-	-	-
	55%	63%	54%	25%	24%
Black	-	-	-	-	-
	6%	5%	5%	8%	8%
Native American	-	-	-	-	-
	1%	1%	1%	1%	1%
Asian	-	-	-	-	-
	9%	4%	5%	3%	2%
Hawaiian	-	-	-	-	-
	0%	0%	0%	0%	0%
Other	-	-	-	-	-
	0%	0%	0%	0%	0%
Multiple Race	-	-	-	-	-
	1%	0%	0%	0%	0%

2020 CENSUS DATA

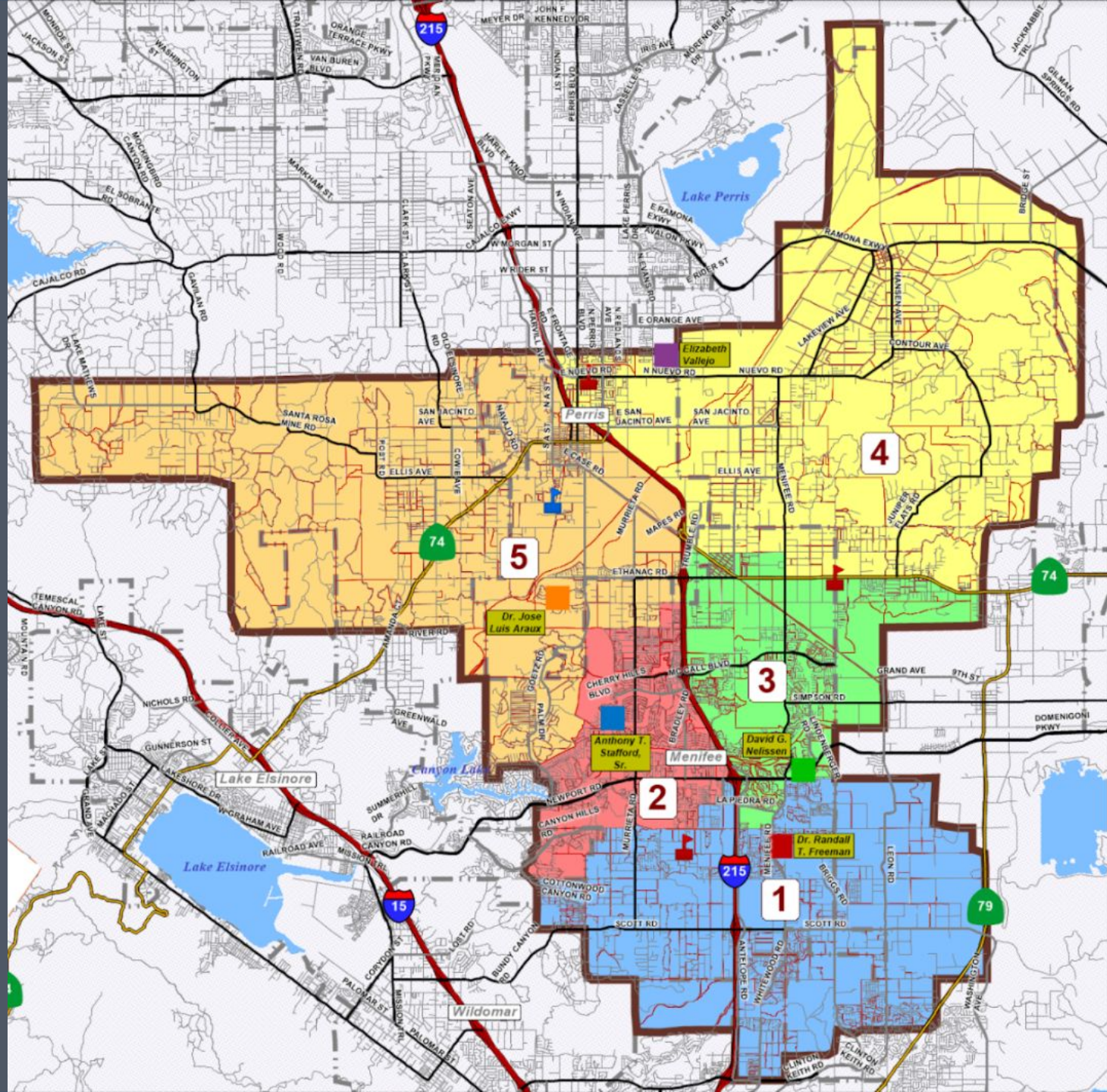
TRUSTEE AREA	1	2	3	4	5
18+ CVAP	38,035	31,881	30,528	24,866	24,809
	25.34%	21.24%	20.34%	16.56%	16.53%
Hispanic Origin	12,013	10,458	12,545	17,398	17,650
	32%	33%	41%	70%	71%
White	16,587	16,430	12,459	4,243	4,372
	44%	52%	41%	17%	18%
Black	2,924	1,934	2,136	1,850	1,503
	8%	6%	7%	7%	6%
Native American	158	122	138	61	68
	0%	0%	0%	0%	0%
Asian	4,183	1,588	1,795	654	616
	11%	5%	6%	3%	2%
Hawaiian	229	139	112	89	59
	0%	0%	0%	0%	0%
Other	214	109	179	101	85
	0%	0%	0%	0%	0%
Multiple Race	1,727	1,101	1,164	470	456
	5%	3%	4%	0%	0%



REALIGNMENT OF TRUSTEE AREAS - OBJECTIVES

- Trustee areas must be adjusted to meet the California and Federal Voting Rights Act requirements
- Trustee areas should be approximately equal in population size (The difference between the largest and smallest trustee area must not exceed the 10% of the ideal population size of each trustee area).
- Boundaries should follow natural and manmade geographic features such as roads, water (streams, shorelines, etc.)
- Trustee areas should take into consideration city and community boundaries, school boundaries and school sites, as far as possible

POTENTIAL REVISED TRUSTEE AREA BOUNDARIES



Feature Legend

Map Layers

- City Boundaries
- Perris Union HSD
- Interstate Highways
- Primary Roads
- Middle Schools
- Open Water
- Road Features
- State Highways
- Secondary Roads
- High Schools

Trustee Area - Scenario 1

- 1
- 2
- 3
- 4
- 5

Board Member Residence

- 1 - EXP 2022
- 2 - EXP 2024
- 3 - EXP 2024
- 4 - EXP ?
- 5 - EXP 2022

Not to Scale



POTENTIAL REVISED TRUSTEE AREA DEMOGRAPHICS

TOTAL POPULATION

TRUSTEE AREA	1	2	3	4	5
Total Population	40,685	41,526	40,802	40,245	40,793
	19.94%	20.35%	20.00%	19.72%	19.99%
Hispanic Origin	13,956	13,928	17,097	28,863	29,627
	34.30%	33.54%	41.90%	71.72%	72.63%
White	16,389	20,072	15,983	6,621	7,021
	40.28%	48.34%	39.17%	16.45%	17.21%
Black	3,010	2,755	2,924	2,653	2,075
	7.40%	6.63%	7.17%	6.59%	5.09%
Native American	177	152	155	105	101
	0.44%	0.37%	0.38%	0.26%	0.25%
Asian	4,349	2,489	2,339	869	818
	10.69%	5.99%	5.73%	2.16%	2.01%
Hawaiian	246	159	150	109	96
	0.60%	0.38%	0.37%	0.27%	0.24%
Other	253	180	229	177	191
	0.62%	0.43%	0.56%	0.44%	0.47%
Multiple Race	2,305	1,791	1,925	848	864
	5.67%	4.31%	4.72%	2.11%	2.12%

CITIZENS VOTING AGE POPULATION

TRUSTEE AREA	1	2	3	4	5
18+ CVAP	29,166	32,952	30,475	28,494	29,032
	19.43%	21.95%	20.30%	18.98%	19.34%
Hispanic Origin	9,097	9,819	11,475	19,588	20,085
	31.19%	29.80%	37.65%	68.74%	69.18%
White	12,532	17,210	13,129	5,423	5,797
	42.97%	52.23%	43.08%	19.03%	19.97%
Black	2,269	2,311	2,284	1,912	1,571
	7.78%	7.01%	7.49%	6.71%	5.41%
Native American	128	126	130	84	79
	0.44%	0.38%	0.43%	0.29%	0.27%
Asian	3,432	2,068	1,913	720	703
	11.77%	6.28%	6.28%	2.53%	2.42%
Hawaiian	202	132	119	93	82
	0.69%	0.40%	0.39%	0.33%	0.28%
Other	171	118	183	114	102
	0.59%	0.36%	0.60%	0.40%	0.35%
Multiple Race	1,335	1,168	1,242	560	613
	4.58%	3.54%	4.08%	1.97%	2.11%



TRUSTEE AREA REALIGNMENT - NEXT STEPS

- The proposed revised trustee areas can be agendaized for approval at a subsequent meeting of the Board of Trustees
- A public hearing, while not required, can be incorporated, either at the same or preceding meeting of the Board of Trustees
- The Board of Trustees may elect to review alternate trustee area scenarios
- The Board of Trustees may request to also hold a Study Session



QUESTIONS?