



LOCAL HAZARD MITIGATION

Prepared by:

Perris Union High School

District

5/17/2017



## CONTACT INFORMATION

### **PERRIS UNION HIGH SCHOOL DISTRICT**

Name: Judy Miller  
Title: Director of Risk Management & Environmental Safety  
Address: 155 E. 4<sup>th</sup> St.  
City, State and Zip: Perris, CA 92570

Direct Contact: (951) 943-6369 ext. 80281  
Fax: (951) 940-5301  
Email: [judy.miller@puhsd.org](mailto:judy.miller@puhsd.org)

## CONTACT INFORMATION

### **PERRIS UNION HIGH SCHOOL DISTRICT**

## PLAN ADOPTION/RESOLUTION

The Perris Union High School District will submit plans to Riverside County Emergency Management Department who will forward to California Governor's Office of Emergency Services (CAL OES) for review prior to being submitted to the Federal Emergency Management Agency (FEMA). In addition, we will wait to receive an "Approval Pending Adoption" letter from FEMA before taking the plan to our local governing bodies for adoption. Upon approval, the Perris Union High School District will insert the signed resolution.

**(PUHSD RESOLUTION TO BE INSERTED HERE UPON APPROVAL OF PLAN FROM Cal OES & FEMA)**

## EXECUTIVE SUMMARY

The purpose of this local hazard mitigation plan is to identify the County's hazards, review and assess past disaster occurrences, estimate the probability of future occurrences and set goals to mitigate potential risks to reduce or eliminate long-term risk to people and property from natural and man-made hazards.

The plan was prepared pursuant to the requirements of the Disaster Mitigation Act of 2000 to achieve eligibility and potentially secure mitigation funding through Federal Emergency Management Agency (FEMA) Flood Mitigation Assistance, Pre-Disaster Mitigation, and Hazard Mitigation Grant Programs.

The Perris Union High School District's continual efforts to maintain a disaster-mitigation strategy is on-going. Our goal is to develop and maintain an all-inclusive plan to include all jurisdictions, special districts, businesses and community organizations to promote consistency, continuity and unification.

The District's planning process followed a methodology presented by FEMA and CAL-OES which included conducting meetings with the Operational Area Planning Committee (OAPC) coordinated by Riverside County Emergency Management Department (EMD) comprised of participating Federal, State and local jurisdictions agencies, special districts, school districts, non-profit communities, universities, businesses, tribes and general public.

The plan identifies vulnerabilities, provides recommendations for prioritized mitigation actions, evaluates resources and identifies mitigation shortcomings, provides future mitigation planning and maintenance of existing plan.

The plan will be implemented upon FEMA approval.



# TABLE OF CONTENT

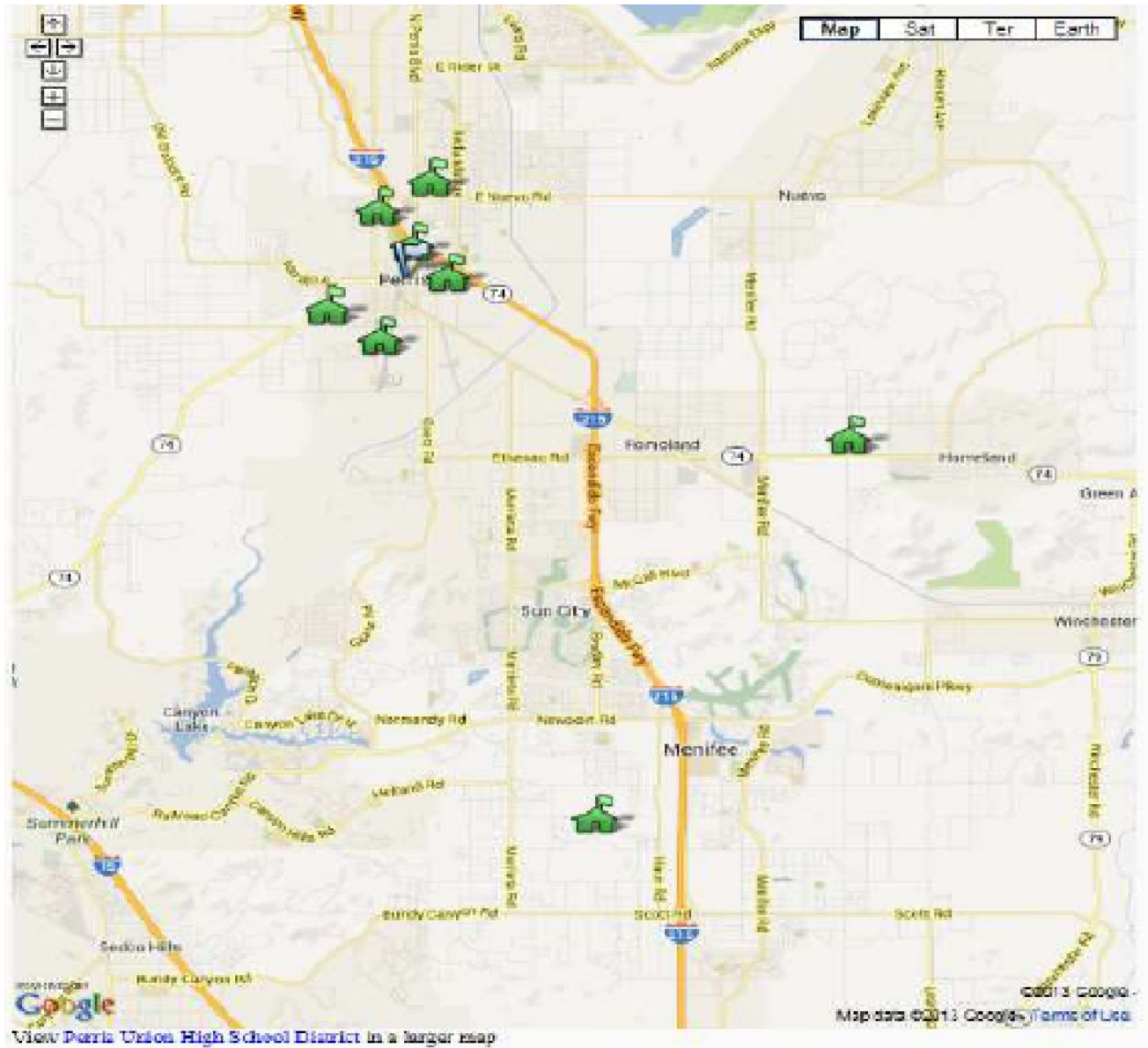
CONTACT INFORMATION	1
PLAN ADOPTION/RESOLUTION	2
EXECUTIVE SUMMARY	3
TABLE OF CONTENT	4
SECTION 1.0 - COMMUNITY PROFILE	6
1.1 PERRIS UNION HIGH SCHOOL DISTRICT MAP	6
1.2 GEOGRAPHY AND CLIMATE DESCRIPTION	6
1.3 BRIEF HISTORY	7
1.4 ECONOMY DESCRIPTION	7
1.5 POPULATION AND HOUSING	7
1.6 DEVELOPMENT TRENDS AND LAND USE	7
SECTION 2.0 - PLANNING PROCESS	8
2.1 LOCAL PLANNING PROCESS	8
2.2 PARTICIPATION IN REGIONAL (OA) PLANNING PROCESS	8
2.3 DATES AVAILABLE FOR PUBLIC COMMENT	9
2.4 PLANS ADOPTED BY RESOLUTION	9
SECTION 3.0 – MITIGATION ACTIONS/UPDATES	9
3.1 UPDATES FROM 2012 PLAN	9
3.2 LIST OF COUNTY AND CITY HAZARDS	9
3.3 NEW HAZARDS OR CHANGES FROM 2012	10
3.4 BRIEF STATEMENT OF UNIQUE HAZARDS	10
3.5 MITIGATION PROJECT UPDATES	10
SECTION 4.0 - HAZARD IDENTIFICATION AND RISK ASSESSMENT	11
4.1 CRITICAL FACILITIES AND INFRASTRUCTURES	11
4.2 ESTIMATING POTENTIAL LOSS	11
4.3 TABLE REPLACEMENT VALUES	11
4.4 IDENTIFICATION OF RISKS AND VULNERABILITIES	12
SECTION 5.0 – COMMUNITY RATING SYSTEM	13
5.1 REPETITIVE LOSS PROPERTIES	13
5.2 NATIONAL FLOOD INSURANCE PROPERTIES	13
SECTION 6.0 - CAPABILITIES ASSESSMENT	13
6.1 REGULATORY MITIGATION CAPABILITIES	14
NIMS Compliant	14
6.2 ADMINISTRATIVE/TECHNICAL MITIGATION CAPABILITIES	14
6.3 FISCAL MITIGATION CAPABILITIES	15
6.5 FUNDING OPPORTUNITIES	15
SECTION 7.0 - MITIGATION STRATEGIES	15
7.1 GOALS AND OBJECTIVES	15
7.2 MITIGATION ACTIONS	16
7.3 ON-GOING MITIGATION STRATEGY PROGRAMS	17
7.4 FUTURE MITIGATION STRATEGIES	18
SECTION 8.0 - PLAN IMPLEMENTATION AND MAINTENANCE PROCESS	19
SECTION 9.0 - INCORPORATION INTO EXISTING PLANNING MECHANISMS	20
SECTION 10.0 - CONTINUED PUBLIC INVOLVEMENT	20
APPENDIX A – PUBLIC NOTICES AND MAPS	21
APPENDIX B – INVENTORY WORKSHEETS	30
APPENDIX C – PLAN REVIEW TOOL/CROSSWALK	34

PAGE  
BLANK  
INTENTI  
ONALLY



## SECTION 1.0 - COMMUNITY PROFILE

### 1.1 PERRIS UNION HIGH SCHOOL DISTRICT MAP



### 1.2 GEOGRAPHY AND CLIMATE DESCRIPTION

The Perris Union High School District (PUHSD) was formed in 1886. It is located in the City of Perris, a community fifteen miles southeast of the City of Riverside. PUHSD covers approximately 184 square miles and includes the City of Perris, City of Menifee, and the unincorporated communities of Romoland as well as a portion of Nuvio.

Major highways running through the District are California State Highway 215 and State Highway 74. Major railways running through the District is the Burlington Northern and Santa Fe. The Metrolink operating within Riverside opened a new route in 2016 beginning in the City of Perris. There is a privately owned airport in the City of Perris (Perris Valley Airport) and March Air Force Base is located directly north of the City of Perris.

The climate is typically a sunny, mild Mediterranean climate. The average temperature range is from the High 30s to the high 90s. Average annual rainfall is 11”.

### **1.3 BRIEF HISTORY**

The first Perris school house was built in 1886; it housed both elementary and high school classes. Perris High School was built, at Perris Boulevard and San Jacinto Avenue in 1913. The Perris Union High School District currently educates about 10,000 students residing through (1) 7-8 middle school, (3) comprehensive high schools, (2) alternative high school programs, and (1) dependent charter military school. The school district also provides adult educational services.

### **1.4 ECONOMY DESCRIPTION**

PUHSD is funded primarily from state funding. Federal and local funding are also sources of revenue. Due to the fiscal crisis in the state of California, PUHSD funding has been reduced over 25%. Funding for deferred maintenance has been cut completely and routine restricted maintenance funds have been reduced significantly. In essence, there are no general funds available to address pre-disaster mitigation.

### **1.5 POPULATION AND HOUSING**

Perris Union High School District serves several communities with a combined population of approximately 156,000 and specifically educates approximately 10,000 secondary and middle school students who live in the Perris Valley.

### **1.6 DEVELOPMENT TRENDS AND LAND USE**

Even though PUHSD experienced exponential growth during the mid-2000s, enrollment was relatively flat from 2009 to 2012. Within the boundary of the school district, new residential housing development has increased and enrollment projections indicate a steady increase through the next 5 years.

PUHSD has purchased building sites for two (2) high schools (9-12) and one (1) middle school (7-8) that are planned to start development around the year 2020.

## SECTION 2.0 - PLANNING PROCESS

### 2.1 LOCAL PLANNING PROCESS

Perris Union High School District coordinates with outside agencies and other districts in the planning process and is an active participant in local and county disaster preparedness committees and planning meetings/workshops as shown in 2.2 below.

Internally, the Risk Management department collaborates primarily with Facilities, Technology and the Maintenance & Operations departments to review and address hazards. PUHSD recently established an LHMP Review Committee, comprised of the above department administrators, which will meet at least once each school year to discuss hazards, mitigation strategies and goals. The Risk Management department facilitates the Committee meetings (sets agenda and generates meeting invites via Google Calendar).

The Emergency Response plan is updated annually to meet current National Incident Management System (NIMS) protocols. PUHSD Safe School Plans include Emergency Response Plans for each school site. Each school site is required to review and update their Safe School Plan (SSP) through their evaluation of a safe and orderly environment as required by Education Code Section 35294.

Each site administrator, along with their school site council which includes community stakeholders, evaluates site data, site surveys, and effectiveness of current programs to determine any changes that may be needed. Every SSP is reviewed and approved by the PUHSD Governing Board annually each spring.

### 2.2 PARTICIPATION IN REGIONAL (OA) PLANNING PROCESS

The Perris Union High School District's Director of Risk Management and Environmental Safety is the District liaison for local and county disaster preparedness and planning. The Director of Risk Management and Environmental Safety regularly attends collaborative meetings and workshops hosted by Riverside County Emergency Management Department and Southwest Comm.

The Perris Union High School District participated in various workshops, conferences, and meetings, including:

- Southwest Comm: Quarterly Meetings
- Operational Area Planning Committee: Quarterly Meetings
- EMD Storm Readiness Conference Calls

- Riverside County EMD Tabletop Workshops
  - September 28, 2015 (Non-Medical Intervention)
  - November 7, 2016 (Multi-Casualty Incident)
- Riverside County LHMP Workshops
  - December 15, 2016
  - June 7, 2017
- Perris Union High School District LHMP Review Committee Meeting
  - June 2, 2017

### **2.3 DATES AVAILABLE FOR PUBLIC COMMENT**

PUHSD provided opportunities for public comments on the LHMP updates by advertising on the District website home page ([www.puhsd.org](http://www.puhsd.org)).

### **2.4 PLANS ADOPTED BY RESOLUTION**

Upon approval by FEMA, the LHMP will be presented to the Perris Union High School District Governing Board in a public meeting for adoption via an official Resolution.

## **SECTION 3.0 – MITIGATION ACTIONS/UPDATES**

### **3.1 UPDATES FROM 2012 PLAN**

The LHMP Review Committee reviewed the Hazard Questionnaire, Summary and Vulnerability Worksheets and determined that the most serious hazards have already been addressed in the previous LHMP, however, an additional natural hazard “Severe Wind Event” has been included as the probability and severity are high enough to greatly impact our District, should this hazard occur at any of our school sites.

### **3.2 LIST OF COUNTY AND CITY HAZARDS**

- Earthquake
- Pandemic Flu
- Wildland Fire
- Electrical Failure
- Emergent Disease/Contamination

- Cyber Attack
- Terrorist Event
- Communications Failure
- Flood
- Civil Disorder
- Drought
- Extreme Weather
- Transportation Failure
- Dam Failure
- Aqueduct

### **3.3 NEW HAZARDS OR CHANGES FROM 2012**

The LHMP Review Committee updated the hazard rankings and added “Severe Wind Event” to the Identification of Risks and Vulnerabilities, Section 4.4.

See Appendix B – Inventory Worksheet for complete ranking chart.

### **3.4 BRIEF STATEMENT OF UNIQUE HAZARDS**

The smoke and ash from wildfires have occasionally impacted our schools causing students and staff to remain indoors to the extent possible. This has had minimal impact to the academic instructional program, but has curtailed recess or athletic practices/competitions.

While flooding from adjacent sources has not impacted our schools, on-site storm water has, on occasion (2008, 2010, 2014 and 2015), entered facilities due to clogged or overwhelmed storm drain systems:

Earthquakes have not caused any damage to school district facilities. Extreme weather, namely high heat days (2012, 2013, 2016 and 2017), impact the activities of students similar to the smoke and ash from wildfires.

Insect infestations from bees occasionally (2015 and 2016) impact our school operations to a minimal degree. Termite infestations have caused damage to structures, but are generally addressed via our integrated pest management program.

On several occasions, blackouts have impacted schools (2015 and 2017), but only momentarily with minimal effect on the instructional program. In terms of “civil unrest”, on an infrequent basis, student walkouts and protests have impacted schools to a minor degree.

### 3.5 MITIGATION PROJECT UPDATES

Type of Hazard	Mitigation Action	Lead Department/Jurisdiction	Status Update
Flood	Developed District communication protocol and action plan (emergency response equipment & supplies) to support all sites	Facilities, Maintenance & Operations	Complete
Storms	Established a maintenance program/checklist to identify possible vulnerabilities/reduce storm drain flooding at all school sites	Facilities, Maintenance & Operations	Complete
Pest	Developed Integrated Pest Management Plans for all District sites to lessen pest invasion & reduce the use of pesticides at sites	Facilities, Maintenance & Operations	Complete
Natural/Man-Made/Medical	Implemented email Alert communication system to notify and request assistance by and for Administrators/Key personnel of site emergencies or threats	Risk Management	On Going
Earthquake	Securing Non-Structural Hazards	Facilities, Maintenance & Operations	On Going

## SECTION 4.0 - HAZARD IDENTIFICATION AND RISK ASSESSMENT

The following table lists the particular critical facilities identified by our planning team as important to protect in the event of a disaster. Schools are critical facilities in that they house our students and must be protected in the event of disasters. In addition, schools serve as disaster relief centers as needed by the Red Cross. Other administrative and ancillary sites are critical in supporting responding to schools during disasters.

### 4.1 CRITICAL FACILITIES AND INFRASTRUCTURES

Critical Facilities Type	Number
Student Services Center	1
District Administration Center / Emergency Operations Center / Communications	1
Maintenance / Warehouse	1
Schools	7
Radio Repeaters	10

## 4.2 ESTIMATING POTENTIAL LOSS

PUHSD has complied with all state and local mandated regulations and ordinances in order to ensure the safety of our students, staff, and facilities.

## 4.3 TABLE REPLACEMENT VALUES

Name of Asset	Replacement Value (\$)	Hazard Specific Info.
Heritage High School	85,291,241	Multiple stories, flood zones
Paloma Valley High School	67,406,458	Multiple stories,
Perris High School	74,016,603	Multiple stories & close proximity to highways
Perris Lake High School	6,936,220	Close proximity rail
Pinacate Middle School	31,334,081	Multiple stories & close proximity to rail
California Military Institute	19,255,803	Close proximity highway
The Academy	6,157,187	Close proximity highway, commercial zone
District Administrative Center	4,828,150	Facility not secured
Student Services Center	1,516,339	Facility not secured
Maintenance Building	2,658,235	Facility not secured
Warehouse	2,227,345	Facility not secured

## 4.4 IDENTIFICATION OF RISKS AND VULNERABILITIES

1. Earthquake – Severity - 4, Probability - 3 Ranking - 1

Jurisdiction is located in a Seismic Hazard Zone. The nearest active earthquake faults San Andreas and Elsinore are located both east and west of the district, but no local damage as yet has been sustained. While the school buildings of the school district are in compliance with the Field Act, a series of changes and improvements to the building code has increased the seismic sustainability of newly constructed facilities, particularly those buildings identified in the AB300 Inventory.

2. Wildland/Urban Fire – Severity – 3, Probability – 3, Ranking - 2

The combination of population density, weather, and unmaintained vegetation presents a potential year-round threat of conflagration. Late spring through early fall months are commonly referred to as the “Fire Season.”

The smoke and ash from wildfires have occasionally impacted our schools causing students and staff will remain indoors to the extent possible. This has had minimal impact to the academic instructional program, but has curtailed recess or athletic practices/competitions.

3. Severe Wind Event – Severity – 3, Probability – 3, Ranking - 3

The Perris Valley is prone to wind gusts and dust storms which can be brought on by climate changes such as drought conditions and high winds that can carry and transport large volumes of dust or sand that adversely affect and damage school site structures, HVAC systems, electronic equipment and can prohibit outdoor activity and exacerbate respiratory conditions.

4. Pandemic – Severity - 3, Probability - 2, Ranking - 4

Perris Union High School District in conjunction with the Riverside County Department of Public Health and Riverside County Office of Emergency Services conducted mass immunizations against the H1N1 virus in the Pandemic of 2009.

5. Flood – Severity - 3, Probability - 2, Ranking - 5

Heavy rain can lead to problems with storm drainage and create localized flood problems. According to the City of Perris Flood Control Maintenance Plan, there are several flooding problem areas in the City. These areas are primarily a result of being in a flood zone. Detailed description on maintenance of all storm drains is reported and followed by the city engineer.

While flooding from adjacent sources has not impacted our schools, on-site storm water has, on occasion, entered facilities due to clogged or overwhelmed storm drain systems.

6. Technological Hazards – Severity - 2, Probability - 2, Ranking - 6

The Santa Fe/Burlington Northern Railroad is strictly commercial freight transportation system. Large quantities and numerous types of hazardous materials are transported through the City by rail on a daily basis. The rail line runs adjacent to Innovative Horizons charter school and in close proximity to many district sites.

Of particular concern is the large number of liquefied petroleum gas vessels that are transported on the system. A derailment and fire, with large exploding liquefied petroleum gas vessels, could cause widespread damage to the school, as has happened in other communities across the country.

See Appendix B - Inventory Worksheet for complete ranking chart.



## SECTION 5.0 – COMMUNITY RATING SYSTEM

### 5.1 REPETITIVE LOSS PROPERTIES

Perris Union High School District does not have any repetitive loss properties.

### 5.2 NATIONAL FLOOD INSURANCE PROPERTIES

Perris Union High School District does not participate in the National Flood Insurance Properties Program.

## SECTION 6.0 - CAPABILITIES ASSESSMENT

The Perris Union High School District abides by all state building, fire, and education code as well as local codes. Our capabilities assessment is divided into five sections to include the following:

- Regulatory Mitigation Capabilities
- Administrative and Technical Mitigation Capabilities
- Fiscal Mitigation Capabilities
- Mitigation Outreach and Partnerships
- Funding Sources

### 6.1 REGULATORY MITIGATION CAPABILITIES

Regulatory Tool	Yes/No	Comments
15 Year Major Maintenance Planning	Yes	Facilities and Maintenance & Operation Services
Building and Fire Codes	Yes	Federal, State and Local Ordinances
Capital Improvements Plan	Yes	Reviewed annually
Emergency Response Plan	Yes	NIMS Compliant
Facilities Master Plan	Yes	2009
Safe School Plans (SSP)	Yes	Site Administration

## 6.2 ADMINISTRATIVE/TECHNICAL MITIGATION CAPABILITIES

Personnel Resources	Yes/No	Department/Position
Administrator/Director	Yes	Cabinet/District Administrators
District Disaster Preparedness	Yes	Director of Risk Management and Environmental Safety
District Emergency Operations Center	Yes	Cabinet/District Administrators
District Technology Plan	Yes	Executive Director Technology
Emergency Response	Yes	All Personnel
Facilities Manager	Yes	Director of Facilities
Human Resource Director	Yes	Assistant Superintendent of HR
Purchasing Agreements/Grant Writer	Yes	Director of Purchasing
Risk Assessment/Mitigation	Yes	Director of Risk Management and Environmental Safety
Translator	Yes	Translator

## 6.3 FISCAL MITIGATION CAPABILITIES

Financial Resources	Accessible/Eligible to Use (Yes/No)	Comments
Community Development Block Grants	Yes	
Capital improvements project funding	Yes	Depending on Budget
Authority to levy taxes for specific purposes	Yes	With Voter Approval
Fees for water, sewer, gas, or electric services	No	
Impact fees for new development	Yes	For New Construction
Incur debt through general obligation bonds	No	
Incur debt through special tax bonds	Yes	Limited
Incur debt through private activities	Yes	Limited
General Funds	Yes	Not Available
Other		

## **6.4 MITIGATION OUTREACH AND PARTNERSHIPS**

PUHSD partners with the City of Perris and County of Riverside OES and has a seat at the City EOC when it is activated. PUHSD has established emergency communication and response protocols with local Police and Fire Departments.

PUHSD facilitates Emergency Preparedness training (includes search & rescue, fire suppression, radio communication) to staff annually and to students as part of the Teen CERT program, through Riverside County EMD. Staff are also required to complete online Emergency Response & Crisis Communication training courses through a school emergency program (Hour Zero) at the beginning of each school year.

PUHSD collaborated with the County of Riverside OES and InfraGard Los Angeles (IGLA) in 2017 to address school safety needs of K-12 schools in Riverside County, this has included: identifying the top threats impacting our schools, developing active shooter policies and procedures and by hosting specialized trainings for educators and law enforcement.

PUHSD has established a weather alert system (placed weather stations at school sites), through EarthNetworks, that notify school site staff through email alerts during times of excessive smog or high temperatures. Medically fragile students are restricted from excessive physical activities and in extreme conditions, outdoor physical activities may be curtailed for students and for staff that work outdoors. Extreme weather protocols are posted on District and School websites.

## **6.5 FUNDING OPPORTUNITIES**

Perris Union High School District has very little access to funding sources that could be applied to hazard mitigation activities.

## **SECTION 7.0 - MITIGATION STRATEGIES**

### **7.1 GOALS AND OBJECTIVES**

**Goal 1: Provide protection for Staff and Student lives from All Hazards**

- Objective 1.1: Provide timely notification and direction to our school based population of imminent and potential hazards.
- Objective 1.2: Protect our school based population’s health and safety by preparing for, responding to, and recovering from the effects of natural or technological disasters.
- Objective 1.3: Improve all efforts to allow for better evacuation routes for school based population and better access for emergency responders.

**Goal 2: Improve Staff and Student Awareness about Hazards and Associated Vulnerabilities that threaten our schools**

- Objective 2.1: Improve and expand the monthly emergency drills at all school sites
- Objective 2.2: Provide specialized training (equipment, tools, workshops) for staff and students to increase preparedness and response handling for identified hazards.

**Goal 3: Establish Mobile EOC**

- Objective 3.1: Equip and set up mobile EOC with communication, radio and command center supplies.
- Objective 3.2: Train and drill with staff to use the mobile EOC.

**Goal 4: Funding for non-structural abatement (Earthquake kits, etc.)**

- Objective 4.1: Purchase disaster supplies for school response teams and classroom disaster supply kits.
- Objective 4.2: Update school maps and improve building identification to assist first responders.

Objective 4.3: Continue to explore potential funding resources.

**7.2 MITIGATION ACTIONS**

PUHSD has taken the following mitigation actions specific to the high risk/vulnerability items listed in section 4:

- PUHSD continues to require NIMS training for site and district administrators; continues to train all staff in ICS; continues with required monthly site earthquake, fire, and lockdown drills, and supports the California Shakeout with an annual District-wide drill.
- PUHSD has developed heat index protocols and installed WeatherBug weather stations at each school site. The weather station network generates a “Heat Index Alert” email notification that auto-generates to the corresponding school site during times of excessive smog or high temperatures. Students are restricted from excessive physical

activities. In extreme conditions, activities such as recess, practices and athletic contests may be curtailed altogether.

- To reduce impact of potential fire damage to grounds or connected wildlands, PUHSD will continue the practice of dead tree removal and weed abatement in high fire risk areas.
- Improved Communication between District and Schools by establishing and maintaining a District-wide emergency radio system that ensures exceptional coverage and signal strength. The radios use UHF frequencies and the system features mountain top repeater stations, and base stations with high gain antennas at all District Administration sites and all school sites; providing excellent coverage even in cases of significant topographical variances.
- PUHSD promotes “closed campuses” and has video surveillance at all sites to mitigate response timeliness and intelligence requirements should a site experience an active shooter event or a terrorism event. PUHSD collaborates with local law enforcement to conduct active shooter drills.

### **7.3 ON-GOING MITIGATION STRATEGY PROGRAMS**

- **Mobile Emergency Operations Center - Supports Natural / Technological Disasters**

Issue/Background: PUHSD has purchased a 2016 Chevrolet Suburban for the purpose of outfitting an Emergency Operation Center (EOC) with radio and emergency response supplies and devices for use as a mobile command center. This mobile EOC is particularly useful as our school sites are spread throughout the Cities of Perris, Menifee and Romoland.

Responsible Office: Risk Management Department

Time Frame: 12 Months

Other Alternatives: No action priority

(High, Medium, Low): High

Cost Estimate: \$45K

Potential Funding: Matching Grant funding received through Southern California Relief / General Funds

Benefits: Will provide a 24/7 support capabilities for PUHSD schools sites and community. Mobile EOC will provide incident command center and support immediate communication (and response to a natural or technological disaster. PUHSD school sites are spread out, can coordinate more effectively with first responders.

- **Emergency Preparedness Training and Equipment (Site Safety Committees)**

Issue/Background: Implemented Site Safety Committees at all sites consisting of administrators, certificated and classified staff. Expanded training opportunities/sponsoring CERT training. Purchased safety equipment: evacuation chairs (stairs), incident command kits, classroom emergency kits, forced entry tool kits, trauma kits, food and water supplies for staff and students.

Other Alternatives: No action

Responsible Office: Risk Management

Priority (High, Medium, Low): High

Cost Estimate: No current cost

Potential Funding: No current cost

Benefits: Support Staff and Student safety awareness and response to natural or technological disasters. Equipment available for safe student evacuation and food/water available for extended accommodations at each school site.

- **Government Emergency Telecommunication Systems (GETS) Card Program**

Issue/Background: To ensure that authorized key school personnel that are responsible for the command and control functions to management during a crisis have redundant communications in place, the GETS Card Program is necessary to ensure continuity of communication for schools. PUHSD participates in the GETS program provided by RCOE.

Other Alternatives: No action

Responsible Office: RCOE Operational Support Services

Priority (High, Medium, Low): Medium

Cost Estimate: No current cost

Potential Funding: No current cost

Benefits: Will provide a 24/7 communication support capabilities for PUHSD staff

## **7.4 FUTURE MITIGATION STRATEGIES**

Project #1: PUHSD Administrative Command Team (ACT) Implementation

Issue/Background: A District Level Administrative Command Team (ACT) has been established and has started a training program in an effort to provide operational support and eventually EOC training to school sites and administration.

Responsible Office: Risk Management and District Level Administrators

Time Frame: 12 months

(High, Medium, Low): Medium

Cost Estimate: \$35K

Potential Funding: General Funds

Benefits: Provide on-site emergency response support and increase confidence and skill levels of staff to improve support provided to students during emergency. Increase effectiveness of safety drills.

Project #2: Eliminate or reduce the loss of life and minimize property damage by providing personal preparedness training and disseminating information to build a family plan.

Issue/Background: The District participates in the annual California Great ShakeOut activities but would like to provide more information by hosting CERT training.

Other Alternatives: No action

Responsible Office: PUHSD, Riverside County Fire Dept-OES and City of Perris.

Priority (High, Medium, Low): Medium

Cost Estimate: Unknown

Potential Funding: FEMA Pre-Disaster Mitigation grants

Benefits (Avoided Losses): Building a more resilient District and community

Schedule: NA

Project #3: The school buildings of the district will be seismically upgraded to current standards.

Issue/Background: While the school buildings of the school district are in compliance with the Field Act, a series of changes and improvements to the building code has increased the seismic sustainability of newly constructed facilities, particularly those buildings identified in the AB300 Inventory.

Other Alternatives: No action

Responsible Office: Facilities and Operations

Priority (High, Medium, Low): High

Cost Estimate: Unknown. A structural engineer needs to be engaged first.

Potential Funding: FEMA Pre-Disaster Mitigation grants, State Seismic Retrofit Funds

Benefits (Avoided Losses): More sustainable and safer buildings.

Schedule: NA

## SECTION 8.0 - PLAN IMPLEMENTATION AND MAINTENANCE PROCESS

The Perris Union High School District LHMP will be updated every five years as required by the Disaster Mitigation Act of 2000. The PUHSD will continue to work with the City of Perris, Riverside County Emergency Management Department and Operational Area Planning Committee when the plan is due to be updated and we will seek input from the public regarding revisions to the current plan.



The LHMP will also be monitored and updated as needed by reviewing changes in the surrounding community and any changes to the existing hazards already noted. This review will be conducted annually, or when laws and regulations change to be consistent and compliant, by the Risk Management Department.

The LHMP Review Committee will come together to review progress toward stated goals of the previous year and set new goals for the current school year.

We will review the following:

- Review past and new hazard risks for the District
- Risk Assessment of Inventory and Critical Facilities/Infrastructures
- Review Goals and Objectives to address current and expected conditions
- Review and Update Mitigation Strategies
- Meet with Community and Stakeholders to obtain Input
- Post plan for Public Review and Comment
- Review Federal, State, Local and District regulations, policies and ordinances to ensure compliance.
- Review the current resources and Capital Improvement Plan projects

If the Committee discovers changes have occurred during the evaluation, the Committee will update the LHMP and make the revisions available.

## SECTION 9.0 - INCORPORATION INTO EXISTING PLANNING MECHANISMS

The City of Perris has a Safety Element in their General Plan that includes a discussion of earthquake, fire, flooding and landslide hazards.

PUHSD has incorporated the 2017 LHMP into the below mechanisms, most specifically the PUHSD Emergency Response Plan (ERP) which is updated annually by district and site level committee members. The ERP includes functional and incident specific protocols for emergency and disaster response, site maps, evacuation routes and tracks drills, emergency supplies and contains forms and resources. The ERP is updated at the beginning of each school year and provided to law enforcement/first responders.

- PUHSD Emergency Response Plan (ERP)
- Building and Fire Codes
- Capital Improvement Plans
- 15 Year Major Maintenance Planning
- Emergencies and Disaster Preparedness Plan - 3516
- Facilities Master Plan
- Safe School Plans

## SECTION 10.0 - CONTINUED PUBLIC INVOLVEMENT

The Perris Union High School District's LHMP will be reviewed on an annual basis during the LHMP Annual Review Meeting. A draft of the 2017 LHMP will be available for review and comment by the public and all interested stakeholders on the PUHSD website ([www.puhsd.org](http://www.puhsd.org)). For more information and /or to provide input, requests can be submitted directly to the Director of Risk Management and Environmental Safety.

## APPENDIX A – PUBLIC NOTICES AND MAPS

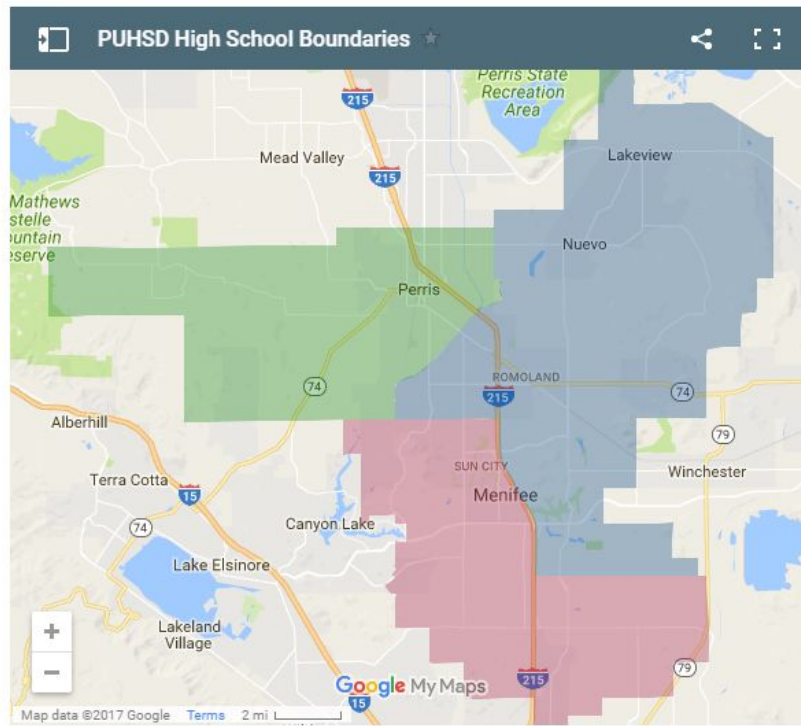
### **SEE ATTACHMENTS**

- 1.) PUHSD BOUNDARY AND SCHOOL SITE MAP
- 2.) WEBSITE ANNOUNCEMENT
- 3.) LETTER OF COMMITMENT
- 4.) LHMP REVIEW COMMITTEE AGENDA /SIGN IN SHEET

# PUHSD BOUNDARY AND SITE MAP

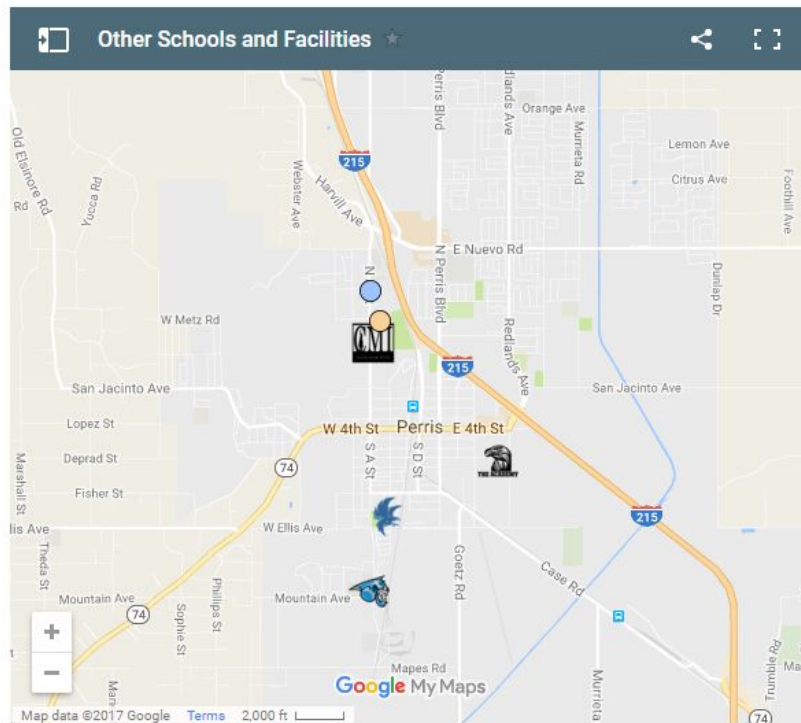
## District and High School Boundaries

- **PUHSD District Office**  
155 E 4th Street Perris, CA 92570  
Phone:(951) 943-6369
- ★ **Perris High School**  
175 East Nuevo Road Perris, CA 92570  
Phone (951) 657-2171
- ★ **Heritage High School**  
26001 Briggs Road Romoland, CA 92585  
Phone: (951) 940-5447
- ★ **Paloma Valley High School**  
31375 Bradley Road Menifee, CA 92584  
Phone (951) 672-6030



## Other Schools and Facilities

- **Student Services Center**  
1151 North A Street, Perris, CA 92570  
Phone: (951) 943-6369
- **Maintenance, Operations, and Transportation**  
300 W Metz Rd, Perris, CA 92570  
Phone: (951) 943-6369
- ★ **California Military Institute**  
755 North A Street, Perris, CA 92570  
Phone: (951) 443-2731
- ★ **The Academy**  
515 East 7th Street Perris, CA 92570  
Phone: (951) 943-6441
- ★ **Perris Lake High School**  
418 Ellis Avenue, Perris, CA 92570  
Phone: (951) 657-7357
- ★ **Pinacate Middle School**  
1990 South A Street, Perris, CA 92570  
Phone: (951) 943-6441
- ★ **Perris Community Adult School**  
418 Ellis Avenue, Perris, CA 92570  
Phone: (951) 657-7357



# WEBSITE ANNOUNCEMENT

-  (<https://www.facebook.com/PerrisUnionHSD>)
-  (<https://twitter.com/puhsd>)
-  (<https://www.instagram.com/PerrisUnionHSD/>)
-  (<https://www.youtube.com/user/PerrisUnionHSDMedia/videos?view=0>)
-  (<https://www.linkedin.com/company/perris-union-high-school-district>)



<http://www.puhsd.org/>

- [About \(/pages/about\)](#) <
- [Parents \(/pages/parents\)](#) <
- [Community \(/pages/community\)](#) <
- [Staff \(/pages/staff\)](#) <

## **Headlines (/blogs/headlines)**

### **PUHSD LOCAL HAZARD MITIGATION PLAN (/BLOGS/HEADLINES/POSTS/PUHSD-LOCAL-HAZARD-MITIGATION-PLAN)**

In conjunction with the Riverside County Office of Emergency Services, PUHSD is in the process of updating our Local Hazard Mitigation Plan (LHMP). This plan is available to any community member for review and comment.

FOR COMMENTS OR QUESTIONS ABOUT THE LHMP

**Judy Miller - Director of Risk Management and Environmental Safety**

951.943.6369 ext. 80281

[Read More about PUHSD Local Hazard Mitigation Plan \(/blogs/headlines/posts/puhsd-local-hazard-mitigation-plan\)](#)

### **SUPE'S ON - FEBRUARY 2017 (/BLOGS/HEADLINES/POSTS/SUPE-S-ON-FEBRUARY-2017)**



Download the latest edition of the Perris Union High School District Newsletter!

Supes's On - 2017 February - Winter (<https://d1h00kd22lgwsm.cloudfront.net/api/file/152b0E7PQHskjYo3kAKg>)

[Read More about Supes's On - February 2017 \(/blogs/headlines/posts/supe-s-on-february-2017\)](#)

### **PUHSD JOINS CSFORALL (/BLOGS/HEADLINES/POSTS/PUHSD-JOINS-CSFORALL)**



Perris Union High School District is proud to join a growing list of schools and districts that have signed the CSForAll Consortium ([www.csforall.org](http://www.csforall.org)) pledging to support professional development for CS teachers, administrators, and guidance counselors; encourage all students to learn CS; offer a variety of opportunities throughout their grade levels for CS learning; and assign a primary point of contact in their school or district for CS education.

[Read More about PUHSD Joins CSForAll \(/blogs/headlines/posts/puhsd-joins-csforall\)](#)

**36 MORE POSTS... (/BLOGS/HEADLINES)**

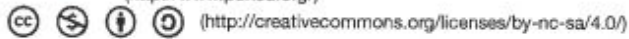
## **Calendar**

## About

The mission of Perris Union High School District is to create high quality relevant learning opportunities for all in a safe and caring environment. We will develop a high quality, caring staff who will be dedicated to learning, and connect students to their education and potential goals. We will care for all students while developing a growth mindset through collaboration, creativity, communication, and critical thinking.



(<http://www.puhsd.org/>)



Unless specifically stated otherwise, this site and all related work is licensed under a Creative Commons Attribution-NonCommercial-ShareAlike 4.0 International License (<http://creativecommons.org/licenses/by-nc-sa/4.0/>).

 Privacy Policy (<http://www.puhsd.org/privacy>)

## LETTER OF COMMITMENT





# PERRIS UNION HIGH SCHOOL DISTRICT

155 E. Fourth Street, Perris, CA 92570  
951-943-6369

[puhsd.org](http://puhsd.org)

[@puhsd](https://twitter.com/puhsd)

[PerrisUnionHSD](https://www.facebook.com/PerrisUnionHSD)

**Superintendent:** Jonathan L. Greenberg, Ed.D.

**Grant Bennett**  
Assistant Superintendent  
Educational Services

**Candace Reines**  
Assistant Superintendent  
Business Services

**Tonya Davis**  
Chief Human  
Resources Officer

**Joseph Williams**  
Executive Director  
Technology

April 1, 2016

## PARTICIPATING JURISDICTION

Riverside County Emergency Management Department  
Kim Saruwatari, Director  
4210 Riverwalk Pkwy, Ste. 300  
Riverside, CA 92505

Re: Letter of Commitment as participating jurisdiction in Riverside County Operational Area  
Multi-Jurisdictional Hazard Mitigation Planning

Dear Riverside County Emergency Management Department,

As the Federal Emergency Management Agency's (FEMA) Local Mitigation Plan requirements under 44 CFR §201.6 specifically identify criteria that allow for multi-jurisdictional mitigation plans and that many issues are better resolved by evaluating hazards more comprehensively by coordinating at the county, regional, or watershed level, Perris Union High School District is submitting this letter of commitment to confirm that Perris Union High School District has agreed to participate in the County of Riverside Emergency Management Department's Multi-Jurisdictional Hazard Mitigation Planning.

Further, as a condition to participating in the mitigation planning; Perris Union High School District agrees to meet the requirements for mitigation plans identified in 44 CFR §201.6 and to provide such cooperation as necessary and in a timely manner to the County of Riverside Emergency Management Department's to complete the plan in conformance with FEMA requirements.

Perris Union High School District understands that it must engage in the following planning process, as described in FEMA's *Local Multi-Hazard Mitigation Planning Guidance* dated July 1, 2008, including, but not limited to:

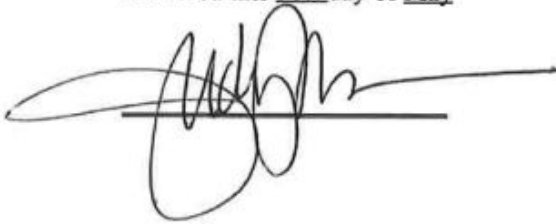
- Identification of hazards unique to the jurisdiction and not addressed in the master planning document;
- The conduct of a vulnerability analysis and an identification of risks, where they differ from the general planning area;
- The formulation of mitigation goals responsive to public input and development of mitigation actions complementary to those goals. A range of actions must be identified specific for each jurisdiction.

Board of Trustees: Edward Agundez - Dr. Jose Luis Araux - Joan D. Cooley - David C. Nelissen - Carolyn A. Twyman

- Demonstration that there has been proactive participation in the planning process by all community stakeholders (examples of participation include relevant involvement in any planning process, attending meetings, contributing research, data, or other information, commenting on drafts of the plan, etc.); and
- Documentation of an effective process to maintain and implement the plan; and,
- Formal adoption of the Multi-Jurisdictional Hazard Mitigation Plan by the jurisdiction's governing body (each jurisdiction must officially adopt the plan).

Therefore, with a full understanding of the obligations incurred by participating in the FEMA hazard mitigation planning process as a participant in a multi-jurisdictional plan; I Judy Miller, Director of Risk Management and Environmental Safety, commit Perris Union High School District to the County of Riverside Emergency Management Department Multi-Jurisdictional Hazard Mitigation Planning effort.

Executed this 31st day of May

A handwritten signature in black ink, appearing to read 'Judy Miller', is written over a horizontal line. The signature is stylized and includes a long horizontal stroke extending to the right.



# LHMP REVIEW COMMITTEE AGENDA /SIGN IN SHEET

christine.smiderly@puhsd.org



## Local Hazard Mitigation Plan (LHMP) - Annual Committee Review Meeting

Created by: christine.smiderly@puhsd.org · Your response: ✓ Yes, I'm going

Time

1pm - 3pm (Pacific Time)

Date

Fri Jun 2, 2017

Where

DAC-Facilities Plan Room-10-Proj

Description

Review the LHMP - Hazard identification, ranking and mitigation strategies and goals

My Notes

Rooms, etc.

✓ DAC-Facilities Plan Room-10-Proj

Guests

✓ christine.smiderly@puhsd.org

✓ Hector Gonzalez

✓ Judy Miller

⊗ Adrienne Bridges

Art Fritz

Michael Slipich

Shane Pinnell



## **LHMP Annual Review Committee Meeting**

**Judy Miller, Director of Risk Management  
Hector Gonzalez, Director Facilities  
Art Fritz, Director of Facilities Services  
Shane Pinnell, Director of Technology  
Michael Slipich, Maintenance & Operations Supervisor**

**Friday, June 2, 2017  
1:00 p.m. - 3:00 p.m.**

**M&O Facilities Room  
155 E. 4th St., Perris, CA 92570**

## **AGENDA**

### **LHMP Review Items:**

- ❖ Review and discuss issues and identify new hazards this school year
- ❖ Rank and Prioritize hazards
- ❖ Update Plan Inventory Worksheets
- ❖ Discuss Mitigation Strategies & Goals
- ❖ Questions



RISK MANAGEMENT  
943-6369 x80281

## LHMP REVIEW MEETING SIGN-IN SHEET

Training Date: June 2, 2017 1:00 P.M.

FACILITATOR: Judy Miller, Director of Risk Management & Environmental Safety



**PERRIS UNION**  
HIGH SCHOOL DISTRICT

Topic(s) Discussed: Local Hazard Mitigation Plan - mitigation strategies and goals review

	NAME (PLEASE PRINT CLEARLY)	SITE	JOB TITLE	SIGNATURE
1	<i>Shere Pinner</i>	DAC	<i>Asst Dir. of Tech</i>	<i>[Signature]</i>
2	<i>Judy Miller</i>	DAC	<i>Dir. RIM</i>	<i>[Signature]</i>
3	<i>Art Fert</i>	DAC	<i>Dir. Facilities Serv</i>	<i>[Signature]</i>
4	<i>Hector Gonzalez</i>	DAC	<i>Director of Facilities</i>	<i>[Signature]</i>
5	<i>Christine Sanchez</i>	DAC	<i>Risk Mgt Secretary</i>	<i>[Signature]</i>
6				
7				
8				
9				
10				
11				
12				
13				
14				
15				
16				
17				
18				
19				
20				

## APPENDIX B – INVENTORY WORKSHEETS

### **SEE ATTACHMENTS**

- 1.) HAZARD IDENTIFICATION QUESTIONNAIRE
- 2.) JURISDICTION VULNERABILITY WORKSHEET



# HAZARD IDENTIFICATION QUESTIONNAIRE

<b>DOES YOUR ORGANIZATION HAVE:</b>	
AIRPORT IN JURISDICTION	X
AIRPORT NEXT TO JURISDICTION	
DAIRY INDUSTRY	
POULTRY INDUSTRY	X
CROPS/ORCHARDS	
DAMS IN JURISDICTION	
DAMS NEXT TO JURISDICTION	X
LAKE/RESERVOIR IN JURISDICTION	X
LAKE/RESERVOIR NEAR JURISDICTION	X
JURISDICTION IN <u>FLOOD PLAIN</u>	X
CONTROLLED FLOOD CONTROL CHANNEL	X
UNCONTROLLED FLOOD CONTROL CHANNEL	
EARTHQUAKE FAULTS IN JURISDICTION	
EARTHQUAKE FAULTS NEXT TO JURISDICTION	X
MOBILE HOME PARKS	X
NON-REINFORCED FREEWAY BRIDGES	
NON-REINFORCED BRIDGES	
BRIDGES IN FLOOD PLAIN	X
BRIDGES OVER OR ACROSS RIVER/STREAM	
ROADWAY CROSSING RIVER/STREAM	X
NON REINFORCED BUILDINGS	
FREEWAY/MAJOR HIGHWAY IN JURISDICTION	X
FREEWAY/MAJOR HIGHWAY NEXT TO JURISDICTION	X
FOREST AREA IN JURISDICTION	
FOREST AREA NEXT TO JURISDICTION	
WITHIN THE 50 MILES SAN ONOFRE EVACUATION ZONE	
MAJOR GAS/OIL PIPELINES IN JURISDICTION	X
MAJOR GAS/OIL PIPELINES NEXT TO JURISDICTION	
RAILROAD TRACKS IN JURISDICTION	X
RAILROAD TRACKS NEXT TO JURISDICTION	
HAZARDOUS WASTE FACILITIES IN JURISDICTION	
HAZARDOUS WASTE FACILITIES NEXT TO JURISDICTION	
HAZARDOUS STORAGE FACILITIES IN JURISDICTION	
HAZARDOUS STORAGE FACILITIES NEXT TO JURISDICTION	
<b>DOES YOUR ORGANIZATION OWN OR OPERATE A FACILITY</b>	
IN A <u>FLOOD PLAIN</u>	X
NEAR FLOOD PLAIN	
NEAR RAILROAD TRACKS	X
NEAR A DAM	X
UPSTREAM FROM A DAM	
DOWNSTREAM FROM A DAM	
DOWNSTREAM OF A LAKE	
DOWNSTREAM FROM A RESERVOIR	
NEAR A CONTROLLED FLOOD CONTROL CHANNEL	X
NEAR UNCONTROLLED FLOOD CONTROL CHANNEL	
ON AN EARTHQUAKE FAULT	
NEAR AN EARTHQUAKE FAULT	

WITHIN THE 50 MILE SAN ONOFRE EVACUATION ZONE	
IN A FOREST AREA	
NEAR A FOREST AREA	
NEAR A MAJOR HIGHWAY	
A HAZARDOUS WASTE FACILITY	
NEAR A HAZARDOUS WASTE FACILITY	
A HAZARDOUS STORAGE FACILITY	
NEAR A HAZARDOUS STORAGE FACILITY	
NON REINFORCED BUILDINGS	
A MAJOR GAS/OIL PIPELINE	X
NEAR A MAJOR GAS/OIL PIPELINE	
<b>DOES YOUR ORGANIZATION HAVE ANY LOCATIONS THAT:</b>	
HAVE BEEN DAMAGED BY EARTHQUAKE AND NOT REPAIRED	
HAVE BEEN DAMAGED BY FLOOD	
HAVE BEEN DAMAGED BY FLOOD MORE THAN ONCE	
HAVE BEEN DAMAGED BY FOREST FIRE	
HAVE BEEN DAMAGED BY FOREST FIRE MORE THAN ONCE	
HAVE BEEN IMPACTED BY A TRANSPORTATION ACCIDENT	
HAVE BEEN IMPACTED BY A PIPELINE EVENT	
<b>EMERGENCY OPERATIONS INFORMATION</b>	
DOES YOUR ORGANIZATION HAVE AN EOC	X
IS YOUR EOC LOCATED IN A <u>FLOOD PLAIN</u>	
NEAR FLOOD PLAIN	X
NEAR RAILROAD TRACKS	X
NEAR A DAM	X
UPSTREAM FROM A DAM	
DOWNSTREAM FROM A DAM	
DOWNSTREAM OF A LAKE	
DOWNSTREAM FROM A RESERVOIR	
NEAR A CONTROLLED FLOOD CONTROL CHANNEL	X
NEAR UNCONTROLLED FLOOD CONTROL CHANNEL	
ON AN EARTHQUAKE FAULT	
NEAR AN EARTHQUAKE FAULT	X
WITHIN THE 50 MILE SAN ONOFRE EVACUATION ZONE	
IN A FOREST AREA	
NEAR A FOREST AREA	
NEAR A MAJOR HIGHWAY	X
A HAZARDOUS WASTE FACILITY	
NEAR A HAZARDOUS WASTE FACILITY	
A HAZARDOUS STORAGE FACILITY	
NEAR A HAZARDOUS STORAGE FACILITY	
NON REINFORCED BUILDINGS	
A MAJOR GAS/OIL PIPELINE	X
NEAR A MAJOR GAS/OIL PIPELINE	
<b>OTHER FACILITY INFORMATION</b>	
<b>ARE THERE LOCATIONS WITHIN YOUR JURISDICTION THAT:</b>	
COULD BE CONSIDERED A TERRORIST TARGET	
COULD BE CONSIDERED A <u>BIO-HAZARD RISK</u>	



# JURISDICTION VULNERABILITY WORKSHEET

NAME: Perris Union High School District	AGENCY: PUHSD	DATE : 5/17/2017
---	---------------	------------------



HAZARD	COUNTY		LOCAL JURISDICTION		
	SEVERITY 0 - 4	PROBABILITY 0 - 4	SEVERITY 0 - 4	PROBABILITY 0 - 4	RANKING 1 - 20
1. EARTHQUAKE			4	3	1
2. WILDLAND FIRE			3	3	2
3. FLOOD			3	2	5
<b>OTHER NATURAL HAZARDS</b>					
4. DROUGHT			2	1	12
5. LANDSLIDES			2	1	18
6. INSECT INFESTATION			2	2	11
7. EXTREME SUMMER/WINTER WEATHER			2	3	8
8. SEVERE WIND EVENT			3	3	3
<b>AGRICULTURAL</b>					
9. DISEASE/CONTAMINATION			2	1	15
10. TERRORISM			2	1	19
<b>OTHER MAN-MADE</b>					
11. PIPELINE			2	1	13
12. AQUEDUCT			2	1	14
13. TRANSPORTATION			3	2	6
14. POWER OUTAGE			2	3	7
15. HAZMAT ACCIDENTS			2	1	17
16. NUCLEAR ACCIDENT			2	1	16
17. TERRORISM			4	1	9
18. CIVIL UNREST			2	2	10
19. JAIL/PRISON EVENT			1	1	20
<b>MEDICAL</b>					
20. PANDEMIC			3	2	4

## APPENDIX C – PLAN REVIEW TOOL/CROSSWALK

**SEE ATTACHMENT**