

Your Life Safety and Security

Solution



Fire • Healthcare • Security

Installation, Integration, Value Engineering, Maintenance, Testing and 24/7 Expert Service

Perris Union High School District - PUHSD

CMI Four Camera Addition

Proposal # RL-050050

version 3

TRL *Systems*
When Reliability Counts



Prepared by:
TRL Systems, Inc.

Raymond Lindemans
800-266-1392
Fax 909-390-8397
rlindemans@trlsystems.com

Prepared for:
**Perris Union High School District -
PUHSD**

155 E. 4th Street
Perris, CA 92570
Ken Womack
(951) 943-6369
ken.womack@puhsd.org

Quote Information:
Quote #: RL-050050

Version: 3
Delivery Date: 08/20/2019
Expiration Date: 11/20/2019

Price Group 1

◇ Scope of Work

TRL Systems shall provide and install four (4) 5MP dome cameras and install at locations identified on attached diagram.

TRL System shall provide four (4) camera licenses and program new cameras to system.

TRL shall program camera licenses and cameras to existing Genetec system. SMA / ADV provided to end date January 2020.

TRL shall add cameras to as-built drawings.

Intelinet subcontractor:

Shall provide materials and labor to install four (4) Cat 6 data cables to four (4) camera locations, Install conduit as required. Terminate cables on existing patch panel. test, label and document cable installation.

◇ Materials

Qty	Item	Description	Price	Ext. Price
4	SBP-300WM1	Samsung Wall Mount	\$53.00	\$212.00
4	SBP-300HM6	Samsung Dome Cap	\$33.00	\$132.00
4	SBP-300B	Dome Camera Conduit Entry Box	\$59.00	\$236.00
4	XNV-8080R	5M Vandal-Resistant Network IR Dome Camera	\$981.00	\$3,924.00
4	GSC-OM-E-1C	1 Camera Connection	\$241.00	\$964.00
24	ADV-CAM-E-1M	SMA for 1 Omnicast Ent Camera -1M	\$4.04	\$96.96
1	LOT	Misc Materials	\$74.00	\$74.00

◇ Materials

Qty	Item	Description	Price	Ext. Price
1	LOT	Sales Tax	\$354.80	\$354.80
			Total:	\$5,993.76

◇ Labor

Qty	Item	Description	Price	Ext. Price
1	Subcontractor	Subcontractor - Lowvoltage	\$5,239.00	\$5,239.00
1	Labor - Security installation	Labor - Security Installation	\$2,160.00	\$2,160.00
1	Labor - Project Management	Labor-Project Management / Programming	\$1,080.00	\$1,080.00
1	Labor - As-built	Labor-As-built drawings	\$285.00	\$285.00
			Total:	\$8,764.00

Quote Summary

◆ Detail Breakdown

Description	Amount
Price Group 1	
Materials	\$5,993.76
Labor	\$8,764.00
Section Subtotal:	\$14,757.76
Total:	\$14,757.76

Clarifications and Exclusions

◆ Exclusions

- All 120 VAC
- Any material or labor not specifically listed as part of this proposal
- IP/LAN Address
- Preventative Maintenance
- Premium Time
- Troubleshooting and repair of existing equipment
 - Painting and patching is excluded
 - Fiber optic cable/connectors/patch panel
 - After normal hours, weekends, or holidays
- POE Network Switches, NVR, Cat 6 Patch Panel in Local IDF
 - Any cost related to obtaining a "Waiver of Subrogation"

Warranty:

TRL Systems provides a standard one (1) year warranty on all parts.

Terms:

All invoices are due and payable to TRL Systems within thirty (30) days of receipt.

All contracts and payment remittance should be addressed to the following location:

TRL Systems, Inc.
9531 Milliken Avenue
Rancho Cucamonga, CA 91730

Please reference this quote number when accepting this proposal.

Acceptance

Signature: _____

Name: _____

Title: _____

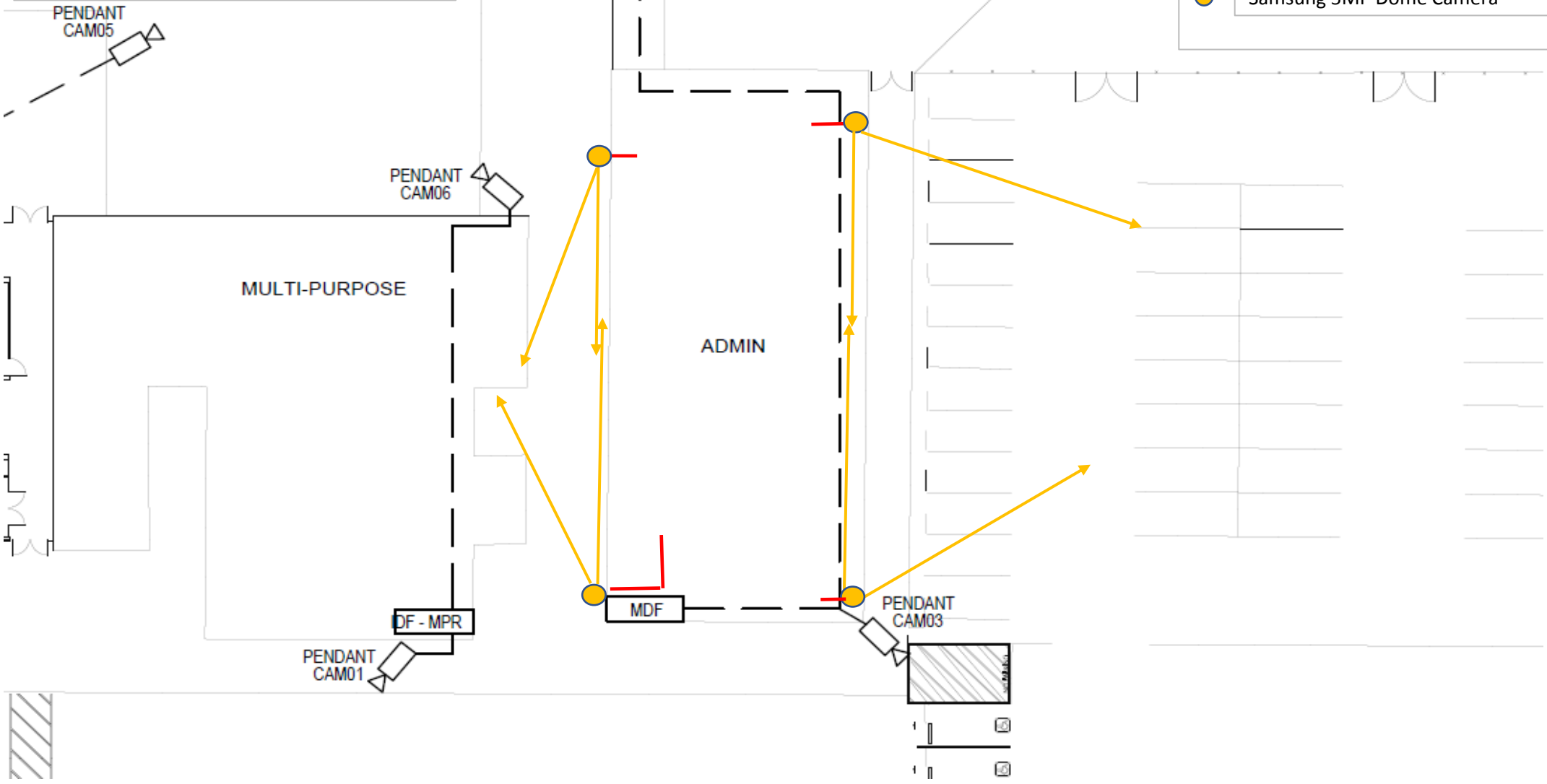
Date: _____

PO Number: _____

California Military Institute
Admin Bldg.
TRL Systems Diagram

LEGEND

- Conduit
- Samsung 5MP Dome Camera



XNV-8080R

5M Vandal-Resistant Network IR Dome Camera

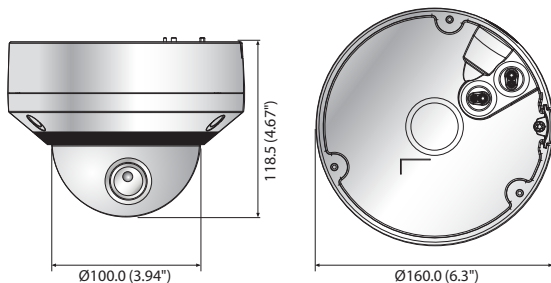


Key Features

- Max. 5 megapixel (2560 x 1920) resolution
- 3.9 ~ 9.4mm (2.4x) motorized varifocal lens
- Max. 30fps@all resolutions (H.265/H.264)
- H.265, H.264, MJPEG codec supported, Multiple streaming
- Day & Night (ICR), WDR (120dB), Defog
- Loitering, Directional detection, Fog detection, Audio detection, Digital auto tracking, Sound classification, Tampering
- Motion detection, Handover
- SD/SDHC/SDXC memory slot (Max. 512GB)
- Hallway view, WiseStream II support
- IR viewable length 50m, IP67/IP66, NEMA 4X, IK10
- LDC support (Lens Distortion Correction)
- PoE / 24V AC, 12V DC, Bi-directional audio support

Dimensions

Unit : mm (inch)



Accessories (Optional)



XNV-8080R	
VIDEO	
Imaging Device	1/1.8" 6M CMOS
Total Pixels	3,096(H) x 2,094(V)
Effective Pixels	2,616(H) x 1,976(V)
Scanning System	Progressive Scan
Min. Illumination	Color : 0.07Lux (F1.3, 1/30sec), B/W : 0Lux (IR LED on)
S / N Ratio	50dB
Video Out	CVBS : 1.0Vpp / 75Ω composite, 720 x 480(N), 720 x 576(P), for installation USB : micro USB type B, 1280 x 720 for installation
LENS	
Focal Length (Zoom Ratio)	3.9 ~ 9.4mm (2.4x) motorized varifocal
Max. Aperture Ratio	F1.3
Angular Field of View	H : 92.1° ~ 38.7° / V : 67.2° ~ 29.0° / D : 119.9° ~ 48.6°
Min. Object Distance	0.5m (1.64ft)
Focus Control	Simple focus (Motorized V/F) / Manual, Remote control via network (Manual, Simple focus)
Lens / Mount Type	DC auto iris, P-Iris / Board-in type
PAN / TILT / ROTATE	
Pan / Tilt / Rotate Range	0° ~ 354° / 0° ~ 67° / 0° ~ 355°
OPERATIONAL	
IR Viewable Length	50m (164.04ft)
Camera Title	Off / On (Displayed up to 85 characters) - W/W : English / Numeric / Special characters - China : English / Numeric / Special / Chinese characters - Common : Multi-line (Max. 5), Color (Grey / Green / Red / Blue / Black / White), Transparency, Auto scale by resolution
Day & Night	Auto (ICR) / Color / B/W / External / Schedule
Backlight Compensation	Off / BLC / HLC (Masking / Dimming), WDR
Wide Dynamic Range	120dB
Contrast Enhancement	SSDR (Off / On)
Digital Noise Reduction	SSNRV (2D+3D noise filter) (Off / On)
Digital Image Stabilization	Off / On
Defog	Off / Auto (Input from fog detection) / Manual
Motion Detection	Off / On (8ea, 8point polygonal zones), Handover
Privacy Masking	Off / On (32ea, Polygonal) - Color : Grey / Green / Red / Blue / Black / White, Mosaic
Gain Control	Off / Low / Middle / High / Manual
White Balance	ATW / AWC / Manual / Indoor / Outdoor (Included mercury & Sodium)
Contrast	Level adjustment
LDC (Lens Distortion Correction)	Off / On (5 levels with min / max)
Electronic Shutter Speed	Minimum / Maximum / Anti flicker (2 ~ 1/12,000sec)
Digital PTZ	24x, Digital PTZ (Preset, Group)
Flip / Mirror	Off / On, Hallway view : 90°/270°
Video & Audio Analytics	Tampering, Loitering, Directional detection, Defocus detection, Fog detection, Virtual line, Enter / Exit, (Dis)Appear, Audio detection, Face detection, Motion detection, Digital auto tracking, Sound classification
Alarm I/O	Input 1ea / Output 1ea
Alarm Triggers	Alarm input, Motion detection, Video & Audio analytics, Network disconnect
Alarm Events	File upload via FTP, E-mail, Notification via E-mail, Local storage (SD/SDHC/SDXC) or NAS recording at event triggers, External output, DPTZ preset Support
Pixel Counter	Support
NETWORK	
Ethernet	RJ-45 (10/100BASE-T)
Video Compression Format	H.265 / H.264 (MPEG-4 part 10/AVC) : Main / Baseline / High, MJPEG
Resolution	2560 x 1920, 2560 x 1440, 1920 x 1080, 1600 x 1200, 1280 x 1024, 1280 x 960, 1280 x 720, 1024 x 768, 800 x 600, 800 x 448, 720 x 576, 720 x 480, 640 x 480, 640 x 360, 320 x 240
Max. Frame Rate	H.265 / H.264 : Max. 30fps at all resolutions, MJPEG : Max. 30fps
Smart Codec	Manual mode (Area-based : 5ea)
WiseStream II	Support
Video Quality Adjustment	H.265 / H.264 : Target bitrate level control, MJPEG : Target bitrate level control
Bitrate Control Method	H.265 / H.264 : CBR or VBR, MJPEG : VBR
Streaming Capability	Multiple streaming (Up to 10 profiles)
Audio In	Selectable (Mic in / Line in), Supply voltage : 2.5V DC (4mA), Input impedance : approx. 2KΩ
Audio Out	Line out, Max output level : 1Vrms
Audio Compression Format	G.711 u-law/G.726 selectable, G.726 (ADPCM) 8KHz, G.711 8KHz G.726 : 16Kbps, 24Kbps, 32Kbps, 40Kbps, AAC-LC : 48Kbps at 8/16/32/48KHz
Audio Communication	Bi-directional (2-way)
IP	IPv4, IPv6
Protocol	TCP/IP, UDP/IP, RTP(UDP), RTP(TCP), RTCP, RTSP, NTP, HTTP, HTTPS, SSL/TLS, DHCP, PPPoE, FTP, SMTP, ICMP, IGMP, SNMPv1/v2c/v3(MIB-2), ARP, DNS, DDNS, QoS, PIM-SM, UPnP, Bonjour
Security	HTTPS(SSL) login authentication, Digest login authentication IP address filtering, User access log, 802.1X authentication (EAP-TLS, EAP-LEAP)
Streaming Method	Unicast / Multicast
Max. User Access	20 users at unicast mode
Edge Storage	SD/SDHC/SDXC 2slot (Up to 512GB) - Continuous recording (1st slot to 2nd slot) NAS (Network Attached Storage), Local PC for instant recording
Application Programming Interface	ONVIF profile S/G, SUNAPI (HTTP API), Wisenet Open Platform
Webpage Language	English, Korean, Chinese, French, Italian, Spanish, German, Japanese, Russian, Swedish, Portuguese, Czech, Polish, Turkish, Dutch, Hungarian, Greek
Web Viewer	Supported OS : Windows 7, 8.1, 10, Mac OS X 10.10, 10.11, 10.12 Non-plugin Webviewer - Supported Browser : Google Chrome 54, MS Edge 38, Mozilla Firefox 49(Window 64bit only), Apple Safari 9 * Mac OS X only Plug-in Webviewer - Supported Browser : MS Explore 11, Apple Safari 9 * Mac OS X only
Central Management Software	SmartViewer, SSM
ENVIRONMENTAL	
Operating Temperature / Humidity	-40°C ~ +55°C (-40°F ~ +131°F) / Less than 90% RH
Storage Temperature / Humidity	-50°C ~ +60°C (-58°F ~ +140°F) / Less than 90% RH
Ingress Protection / Vandal Resistance	IP67, IP66, NEMA 4X / IK10
ELECTRICAL	
Input Voltage / Current	24V AC ±10%, 12V DC ±10%, PoE (IEEE802.3af)
Power Consumption	Max. 11.5W (12VDC), Max. 12.95W (PoE), Max. 14W (24VAC)
MECHANICAL	
Color / Material	Ivory / Aluminum
Dimensions (WxH)	Ø160.0 x 118.5mm (Ø6.3" x 4.67")
Weight	1.01Kg (2.23lb)

* The latest product information / specification can be found at hanwha-security.com
* Design and specifications are subject to change without notice.